

附录1 群系面积变化统计

Appendix 1 Statistics of formations area change

群系 Formation	原始面积 Original area (km ²)	叠加土地利用后的面积 Area after intersection of land use (km ²)		损失的面积 Lost area (km ²)
		2000	2020	
含榿木、映山红的马尾松林 <i>Pinus massoniana</i> forest with <i>Loropetalum chinense</i> , <i>Rhododendron simsii</i>	4.67	1.90	1.57	0.32
华山松、川滇高山栎、干香柏林 <i>Pinus armandii</i> , <i>Quercus aquifolioides</i> , <i>Cupressus duclouxiana</i> forest	216.13	110.58	100.47	10.11
华山松、滇青冈林 <i>Pinus armandii</i> , <i>Quercus schottkyana</i> forest	362.88	261.03	247.97	13.05
杉木林 <i>Cunninghamia lanceolata</i> forest	463.49	313.60	280.16	33.44
思茅松林 <i>Pinus kesiya</i> var. <i>langbianensis</i> forest	11,323.37	8,843.40	8,513.88	329.52
云南松、矮高山栎林 <i>Pinus yunnanensis</i> , <i>Quercus monimotricha</i> forest	1,661.25	1,339.55	1,299.66	39.89
云南松、滇油杉、黄毛青冈林 <i>Pinus yunnanensis</i> , <i>Keteleeria evelyniana</i> , <i>Cyclobalanopsis delavayi</i> forest	23,397.62	16,730.66	15,634.72	1,095.94
云南松、截果石栎、红木荷林 <i>Pinus yunnanensis</i> , <i>Lithocarpus truncatus</i> , <i>Schima wallichii</i> forest	11,976.58	9,165.30	8,581.70	583.60
云南松林 <i>Pinus yunnanensis</i> forest	165.86	132.74	122.75	9.99
含南烛、碎米花的云南松林 <i>Pinus yunnanensis</i> forest with <i>Vaccinium bracteatum</i> , <i>Rhododendron spiciferum</i>	10.74	4.76	4.12	0.63
含白栎、短柄栎的云南松林 <i>Pinus yunnanensis</i> forest with <i>Quercus fabri</i> , <i>Quercus serrata</i>	805.00	616.77	565.17	51.60
苍山冷杉林 <i>Abies delavayi</i> forest	5,516.80	5,337.55	5,312.97	24.57
川滇冷杉林 <i>Abies forrestii</i> forest	25.38	21.07	20.59	0.48
川西云杉林 <i>Picea likiangensis</i> var. <i>rubescens</i> forest	186.66	182.98	182.83	0.15
大果红杉林 <i>Larix potaninii</i> var. <i>macrocarpa</i> forest	150.67	145.99	145.17	0.82
高山松林 <i>Pinus densata</i> forest	5,986.36	5,184.24	5,075.86	108.38
丽江云杉林 <i>Picea likiangensis</i> forest	576.27	542.66	524.16	18.50
鳞皮冷杉林 <i>Abies squamata</i> forest	14.46	14.35	14.35	0.01
喜马拉雅冷杉林 <i>Abies pindrow</i> forest	14.47	14.47	14.47	0.00
油麦吊杉林 <i>Picea brachytyla</i> var. <i>complanata</i> forest	258.39	222.35	221.40	0.95
云南铁杉林 <i>Tsuga dumosa</i> forest	1,986.44	1,827.97	1,773.14	54.83
长苞冷杉林 <i>Abies georgei</i> forest	5,987.37	5,888.76	5,871.32	17.44
紫果云杉林 <i>Picea purpurea</i> forest	92.56	82.35	81.42	0.93
云南铁杉、滇木荷林 <i>Tsuga dumosa</i> , <i>Schima sinensis</i> forest	162.14	135.81	134.08	1.73
云南铁杉、高山栎林 <i>Tsuga dumosa</i> , <i>Quercus semecarpifolia</i> forest	68.36	68.36	68.36	0.00
云南铁杉、桦、槭林 <i>Tsuga dumosa</i> , <i>Betula</i> spp., <i>Acer</i> spp. forest	32.72	30.56	30.17	0.40
云南铁杉、水青树林 <i>Tsuga dumosa</i> , <i>Tetracentron sinense</i> forest	17.81	17.81	17.81	0.00
栓皮栎、麻栎林 <i>Quercus variabilis</i> , <i>Quercus acutissima</i> forest	113.57	101.64	96.13	5.51
包石栎林 <i>Lithocarpus cleistocarpus</i> forest	1,078.33	854.09	815.72	38.37
多变石栎、银木荷林 <i>Lithocarpus variolosus</i> , <i>Schima argentea</i> forest	6,452.42	5,938.36	5,812.83	125.54
峨眉栲林 <i>Castanopsis platyacantha</i> forest	19.02	15.35	14.54	0.82
高山栲林、黄毛青冈林和滇青冈林 <i>Castanopsis delavayi</i> forest, <i>Cyclobalanopsis delavayi</i> forest, <i>Quercus schottkyana</i> forest	2,683.27	2,041.01	1,927.49	113.52
栲树、南岭栲林 <i>Castanopsis fargesii</i> , <i>Castanopsis fordii</i> forest	17.59	11.48	10.84	0.64
罗浮栲、杯果栲林 <i>Castanopsis fabri</i> , <i>Castanopsis calathiformis</i> forest	1,069.36	881.63	743.07	138.56
木果石栎、硬斗石栎林和薄片青冈、西藏石栎林 <i>Lithocarpus xylocarpus</i> , <i>Lithocarpus hancei</i> and <i>Cyclobalanopsis lamellosa</i> , <i>Lithocarpus xizangensis</i> forest	2,748.35	2,194.59	2,162.84	31.75
小果栲、截果石栎林 <i>Castanopsis fleuryi</i> , <i>Lithocarpus truncatus</i> forest	813.20	631.70	611.88	19.81
元江栲林 <i>Castanopsis orthacantha</i> forest	376.51	285.84	270.88	14.96
红花荷、滇桂木莲林 <i>Rhodoleia championii</i> , <i>Manglietia forrestii</i> forest	1,624.62	1,438.50	1,382.90	55.59
印栲、刺栲、红木荷林 <i>Castanopsis indica</i> , <i>Castanopsis hystrix</i> , <i>Schima wallichii</i> forest	9,976.03	8,357.05	7,962.37	394.68

群系 Formation	原始面积 Original area (km ²)	叠加土地利用后的面积 Area after intersection of land use (km ²)		损失的面积 Lost area (km ²)
		2000	2020	
川滇高山栎林 <i>Quercus aquifolioides</i> forest	702.10	675.37	670.45	4.91
光叶高山栎、灰背栎林 <i>Quercus rehderiana</i> , <i>Quercus senescens</i> forest	55.66	40.64	38.70	1.94
黄背栎林 <i>Quercus pannosa</i> forest	32.93	23.07	21.33	1.74
帽斗栎林和长穗高山栎林 <i>Quercus guyavifolia</i> forest and <i>Quercus longispica</i> forest	21.41	21.41	21.41	0.00
高山榕、麻辣林 <i>Ficus altissima</i> , <i>Chukrasia tabularis</i> forest	53.90	14.45	9.70	4.75
木棉、楹树林 <i>Bombax ceiba</i> , <i>Albizia chinensis</i> forest	190.87	157.62	155.92	1.70
滇木花生、云南蕈树林 <i>Madhuca pasquieri</i> , <i>Altingia yunnanensis</i> forest	260.66	244.28	187.38	56.90
千果榄仁、番龙眼林 <i>Terminalia myriocarpa</i> , <i>Pometia pinnata</i> forest	1,386.94	1,091.01	954.81	136.20
青皮、蝴蝶树林 <i>Vatica mangachapoi</i> , <i>Heritiera parvifolia</i> forest	38.89	35.27	27.44	7.83
网脉肉托果、滇楠、大蒜树林 <i>Semecarpus reticulatus</i> , <i>Machilus nanmu</i> , <i>Dysoxylum spicatum</i> forest	407.08	332.92	256.37	76.55
望天树林 <i>Parashorea chinensis</i> forest	26.96	16.80	16.43	0.37
云南龙脑香、隐翼林 <i>Dipterocarpus retusus</i> , <i>Crypteronia paniculata</i> forest	27.77	26.91	20.19	6.73
慈竹林 <i>Bambusa emeiensis</i> forest	10.12	3.71	3.50	0.20
箭竹丛 <i>Fargesia spathacea</i> scrub	614.51	504.71	485.44	19.27
毛竹林 <i>Phyllostachys edulis</i> forest	15.03	14.77	14.52	0.25
牡竹林 <i>Dendrocalamus strictus</i> forest	485.87	349.07	311.71	37.36
矮黄栌灌丛和云南山蚂蝗灌丛 <i>Cotinus nanus</i> scrub and <i>Desmodium yunnanense</i> scrub	167.81	131.69	124.31	7.37
白刺花、小鞍叶羊蹄甲灌丛 <i>Sophora davidii</i> , <i>Bauhinia brachycarpa</i> var. <i>microphylla</i> scrub	659.46	570.78	544.79	26.00
白栎、短柄栎灌丛 <i>Quercus fabri</i> , <i>Quercus serrata</i> scrub	5.04	3.73	3.51	0.22
岗松灌丛 <i>Baeckea frutescens</i> scrub	1,248.39	993.97	827.61	166.37
茅栗、白栎灌丛 <i>Castanea seguinii</i> , <i>Quercus fabri</i> scrub	87.20	38.67	30.30	8.37
櫟木、南烛、映山红灌丛 <i>Loropetalum chinense</i> , <i>Vaccinium bracteatum</i> , <i>Rhododendron simsii</i> scrub	174.67	57.00	48.53	8.47
南烛、云南杨梅灌丛 <i>Vaccinium bracteatum</i> , <i>Myrica nana</i> scrub	43,036.92	30,873.26	28,663.09	2,210.17
雀梅藤、小果蔷薇、火棘、龙须藤灌丛 <i>Sageretia thea</i> , <i>Rosa cymosa</i> , <i>Pyracantha fortuneana</i> , <i>Phanera championii</i> scrub	95.72	62.11	54.88	7.23
栓皮栎、麻栎灌丛 <i>Quercus variabilis</i> , <i>Quercus acutissima</i> scrub	23.49	21.36	20.90	0.45
桃金娘灌丛 <i>Rhodomyrtus tomentosa</i> scrub	136.43	74.31	58.91	15.41
铁仔、金花小檗灌丛 <i>Myrsine africana</i> , <i>Berberis wilsoniae</i> scrub	1,920.92	1,417.49	1,199.96	217.53
杨叶木姜子、盐肤木灌丛 <i>Litsea populifolia</i> , <i>Rhus chinensis</i> var. <i>roxburghii</i> scrub	3,446.55	2,173.29	2,001.08	172.21
余甘子、糙叶水锦树灌丛 <i>Phyllanthus emblica</i> , <i>Wendlandia scabra</i> scrub	5,998.51	4,053.78	3,794.41	259.36
余甘子、水锦树灌丛 <i>Phyllanthus emblica</i> , <i>Wendlandia uvariifolia</i> scrub	1,180.62	913.28	884.89	28.39
余甘子灌丛 <i>Phyllanthus emblica</i> scrub	8,023.45	5,939.27	5,501.05	438.23
中平树灌丛 <i>Macaranga denticulata</i> scrub	1,374.63	1,005.70	933.91	71.80
中平树、云南银柴、毛桐灌丛 <i>Macaranga denticulata</i> , <i>Aporosa yunnanensis</i> , <i>Mallotus barbatus</i> scrub	629.89	542.61	449.47	93.14
竹叶椒、荚蒾灌丛 <i>Zanthoxylum armatum</i> , <i>Viburnum dilatatum</i> scrub	246.13	173.18	154.51	18.67
竹叶椒、球核荚蒾灌丛 <i>Zanthoxylum armatum</i> , <i>Viburnum propinquum</i> scrub	169.71	138.07	131.06	7.01
竹叶椒、樟叶荚蒾灌丛 <i>Zanthoxylum armatum</i> , <i>Viburnum cinnamomifolium</i> scrub	3,373.42	2,669.17	2,215.04	454.14
仙人掌、金合欢灌丛 <i>Opuntia dillenii</i> , <i>Vachellia farnesiana</i> scrub	46.46	45.89	45.57	0.31
绢毛蔷薇、匍匐栒子灌丛 <i>Rosa sericea</i> , <i>Cotoneaster adpressus</i> scrub	12.68	11.86	11.73	0.13
矮高山栎灌丛 <i>Quercus monimotricha</i> scrub	82.87	62.01	57.71	4.30
草原杜鹃灌丛 <i>Rhododendron telmateium</i> scrub	7.35	7.35	7.35	0.00
淡黄杜鹃灌丛 <i>Rhododendron flavidum</i> scrub	4.64	4.60	4.59	0.00

群系 Formation	原始面积 Original area (km ²)	叠加土地利用后的面积 Area after intersection of land use (km ²)		损失的面积 Lost area (km ²)
		2000	2020	
黄毛杜鹃、金背杜鹃灌丛 <i>Rhododendron rufum</i> , <i>Rhododendron clementinae</i> subsp. <i>aureodorsale</i> scrub	54.40	52.48	52.27	0.21
马缨花杜鹃灌丛 <i>Rhododendron delavayi</i> scrub	30.91	30.41	30.33	0.07
腺房杜鹃灌丛 <i>Rhododendron adenogynum</i> scrub	9,274.22	8,326.03	8,140.57	185.46
雪层杜鹃、髯花杜鹃灌丛 <i>Rhododendron nivale</i> , <i>Rhododendron anthopogon</i> scrub	611.02	610.66	610.45	0.21
腋花杜鹃灌丛 <i>Rhododendron racemosum</i> scrub	3,817.16	3,456.94	3,400.91	56.03
密枝杜鹃灌丛 <i>Rhododendron fastigiatum</i> scrub	588.37	583.78	582.84	0.94
白茅、密序野古草草从 <i>Imperata cylindrica</i> var. <i>major</i> , <i>Arundinella bengalensis</i> grassland	14,071.06	10,759.65	9,691.30	1,068.35
白茅、扭黄茅、龙须草草从 <i>Imperata cylindrica</i> var. <i>major</i> , <i>Heteropogon contortus</i> , <i>Silene linearifolia</i> grassland	214.67	159.04	151.64	7.40
刺芒野古草、云南裂稃草草从 <i>Arundinella setosa</i> , <i>Schizachyrium delavayi</i> grassland	29,870.02	20,098.00	18,652.18	1,445.81
刺芒野古草草从 <i>Arundinella setosa</i> grassland	22,823.33	17,469.71	16,124.05	1,345.66
金茅、野古草、青香茅草从 <i>Eulalia speciosa</i> , <i>Arundinella hirta</i> , <i>Cymbopogon mekongensis</i> grassland	75.62	69.18	67.65	1.53
类芦、棕叶芦、斑茅草从 <i>Neyraudia reynaudiana</i> , <i>Thysanolaena latifolia</i> , <i>Saccharum arundinaceum</i> grassland	1,082.97	718.12	635.34	82.78
芒草、野古草、金茅草从 <i>Miscanthus sinensis</i> , <i>Arundinella hirta</i> , <i>Eulalia speciosa</i> grassland	79.93	55.94	50.78	5.16
芒草草从 <i>Miscanthus sinensis</i> grassland	34.58	27.78	23.49	4.28
扭黄茅、孔颖草、芸香草草从 <i>Heteropogon contortus</i> , <i>Bothriochloa pertusa</i> , <i>Cymbopogon distans</i> grassland	2,311.52	1,763.69	1,601.02	162.67
扭黄茅、龙须草、白茅草从 <i>Heteropogon contortus</i> , <i>Eulaliopsis binata</i> , <i>Imperata cylindrica</i> var. <i>major</i> grassland	676.07	544.54	510.74	33.80
扭黄茅草从 <i>Heteropogon contortus</i> grassland	9.36	5.94	5.37	0.57
穗序野古草草从 <i>Arundinella hookeri</i> grassland	10,274.71	7,593.97	7,164.42	429.55
羊茅、野青茅、杂类草草甸 <i>Festuca ovina</i> , <i>Deyeuxia pyramidalis</i> , forb meadow	6,431.24	5,431.35	5,279.88	151.47
小嵩草高寒草甸 <i>Kobresia pygmaea</i> meadow	13.09	13.09	13.09	0.00
囊状嵩草、杂类草高寒草甸 <i>Kobresia fragilis</i> , forb alpine meadow	3,554.78	3,474.63	3,462.17	12.46
鳞叶点地梅垫状植被 <i>Androsace squarrosula</i> cushion vegetation	7.93	7.93	7.93	0.00
风毛菊、红景天、垂头菊稀疏植被 <i>Saussurea japonica</i> , <i>Rhodiola rosea</i> , <i>Cremanthodium reniforme</i> sparse vegetation	1,217.13	1,216.92	1,216.89	0.03
水母雪莲、风毛菊稀疏植被 <i>Saussurea medusa</i> , <i>Saussurea glomerata</i> sparse vegetation	200.57	200.57	200.57	0.00

附录2 IUCN生态系统红色名录评估标准的依据及不同受威胁等级阈值

Appendix 2 The basis and thresholds of different threatened level in IUCN Red List of Ecosystems evaluation criterion

受威胁等级 Threatened level	标准 A: 面积衰退率 Criterion A: Area decline ratio (%)	标准 B1: 生境范围面积 B1: Area of extent of occurrence (km ²)	标准 B2: 10 km × 10 km 网格数 Criterion B2: Number of 10 km × 10 km grids
极危 Critically Endangered (CR)	≥ 80	≤ 2,000	≤ 2
濒危 Endangered (EN)	≥ 50	≤ 20,000	≤ 20
易危 Vulnerable (VU)	≥ 30	≤ 50,000	≤ 50

附录3 植被保护价值评价指标体系及其权重值

Appendix 3 The indicators and their weights for assessing the conservation values of vegetation formations

一级指标 First-level indicators	二级指标 Second-level indicators	权重 Weights
生态系统质量 Ecosystem quality	冠层高度 Canopy height	0.288
	碳储量 Carbon storage	0.176
	保护濒危物种丰富度 Richness of endangered species	0.536

附录4 IUCN生态系统红色名录各标准结果及每个群系的数据

Appendix 4 The result of each criterion in the IUCN Red List of Ecosystems and statistics for each formations

群系 Formation	50 年面积损 失率 Area decline ratio of 50 years (%)	生境范围 Extent of occurrence (EEO) (km ²)	占地面积(10 km × 10 km 网格数) Area of occupancy (AOO) (No. of 10 km × 10 km grids)	受威胁等级评估结果 The evaluation results of threatened level			
				标准 A Criterion A	标准 B1 Criterion B1	标准 B2 Criterion B2	综合 Comprehensive
含榿木、映山红的马尾松林 <i>Pinus massoniana</i> forest with <i>Loropetalum chinense</i> , <i>Rhododendron simsii</i>	42.5	14.35	1	易危 Vulnerable (VU)	极危 Critically Endangered (CR)	CR	CR
华山松、川滇高山栎、干香柏林 <i>Pinus armandii</i> , <i>Quercus aquifolioides</i> , <i>Cupressus duclouxiana</i> forest	22.9	11,199.02	22	近危/无危 Near Threatened (NT)/Least Concern (LC)	濒危 Endangered (EN)	VU	EN
华山松、滇青冈林 <i>Pinus armandii</i> , <i>Quercus schottkyana</i> forest	12.5	45,958.45	24	NT/LC	VU	VU	VU
杉木林 <i>Cunninghamia lanceolata</i> forest	26.7	85,415.20	45	NT/LC	NT/LC	VU	VU
思茅松林 <i>Pinus kesiya</i> var. <i>langbianensis</i> forest	9.3	134,591.60	401	NT/LC	NT/LC	NT/LC	NT/LC
云南松、矮高山栎林 <i>Pinus yunnanensis</i> , <i>Quercus monimotricha</i> forest	7.5	141,946.60	119	NT/LC	NT/LC	NT/LC	NT/LC
云南松、滇油杉、黄毛青冈林 <i>Pinus yunnanensis</i> , <i>Keteleeria evelyniana</i> , <i>Cyclobalanopsis delavayi</i> forest	16.4	154,746.30	891	NT/LC	NT/LC	NT/LC	NT/LC
云南松、截果石栎、红木荷林 <i>Pinus yunnanensis</i> , <i>Lithocarpus truncatus</i> , <i>Schima wallichii</i> forest	15.9	326,582.40	551	NT/LC	NT/LC	NT/LC	NT/LC
云南松林 <i>Pinus yunnanensis</i> forest	18.8	22,149.47	16	NT/LC	VU	EN	EN
含南烛、碎米花的云南松林 <i>Pinus yunnanensis</i> forest with <i>Vaccinium bracteatum</i> , <i>Rhododendron spiciferum</i>	33.2	18.46	1	VU	CR	CR	CR
含白栎、短柄栎的云南松林 <i>Pinus yunnanensis</i> forest with <i>Quercus fabri</i> , <i>Quercus serrata</i>	20.9	1,799.43	24	NT/LC	CR	VU	CR
苍山冷杉林 <i>Abies delavayi</i> forest	1.2	79,307.48	248	NT/LC	NT/LC	NT/LC	NT/LC
川滇冷杉林 <i>Abies forrestii</i> forest	5.7	30.82	1	NT/LC	CR	CR	CR
川西云杉林 <i>Picea likiangensis</i> var. <i>rubescens</i> forest	0.2	9,405.50	10	NT/LC	EN	EN	EN
大果红杉林 <i>Larix potaninii</i> var. <i>macrocarpa</i> forest	1.4	5,226.18	14	NT/LC	EN	EN	EN
高山松林 <i>Pinus densata</i> forest	5.2	45,921.48	248	NT/LC	VU	NT/LC	VU
丽江云杉林 <i>Picea likiangensis</i> forest	8.5	12,830.04	30	NT/LC	EN	VU	EN
鳞皮冷杉林 <i>Abies squamata</i> forest	0.1	637.73	5	NT/LC	CR	EN	CR
喜马拉雅冷杉林 <i>Abies pindrow</i> forest	0.0	–	–	NT/LC	–	–	NT/LC
油麦吊杉林 <i>Picea brachytyla</i> var. <i>complanata</i> forest	1.1	23,567.82	16	NT/LC	VU	EN	EN
云南铁杉林 <i>Tsuga dumosa</i> forest	7.5	112,927.40	123	NT/LC	NT/LC	NT/LC	NT/LC
长苞冷杉林 <i>Abies georgei</i> forest	0.7	26,815.87	202	NT/LC	VU	NT/LC	VU
紫果云杉林 <i>Picea purpurea</i> forest	2.8	940.10	8	NT/LC	CR	EN	CR
云南铁杉、滇木荷林 <i>Tsuga dumosa</i> , <i>Schima sinensis</i> forest	3.2	13,217.82	15	NT/LC	EN	EN	EN
云南铁杉、高山栎林 <i>Tsuga dumosa</i> , <i>Quercus semecarpifolia</i> forest	0	–	–	NT/LC	–	–	NT/LC
云南铁杉、桦、槭林 <i>Tsuga dumosa</i> , <i>Betula</i> spp., <i>Acer</i> spp. forest	3.2	774.14	4	NT/LC	CR	EN	CR
云南铁杉、水青树林 <i>Tsuga dumosa</i> , <i>Tetracentron sinense</i> forest	0	–	–	NT/LC	–	–	NT/LC
栓皮栎、麻栎林 <i>Quercus variabilis</i> , <i>Quercus acutissima</i> forest	13.5	4,636.04	18	NT/LC	EN	EN	EN
包石栎林 <i>Lithocarpus cleistocarpus</i> forest	11.2	43,638.34	66	NT/LC	VU	NT/LC	VU
多变石栎、银木荷林 <i>Lithocarpus variolosus</i> , <i>Schima argentea</i> forest	5.3	224,924.00	299	NT/LC	NT/LC	NT/LC	NT/LC
峨眉栲林 <i>Castanopsis platyacantha</i> forest	13.3	92.09	4	NT/LC	CR	EN	CR
高山栲林、黄毛青冈林和滇青冈林 <i>Castanopsis delavayi</i> forest, <i>Cyclobalanopsis delavayi</i> forest, <i>Quercus schottkyana</i> forest	13.9	247,680.90	173	NT/LC	NT/LC	NT/LC	NT/LC

群系 Formation	50 年面积损 失率 Area decline ratio of 50 years (%)	生境范围 Extent of occurrence (EOO) (km ²)	占地面积(10 km × 10 km 网格数) Area of occupancy (AOO) (No. of 10 km × 10 km grids)	受威胁等级评估结果 The evaluation results of threatened level			
				标准 A Criterion A	标准 B1 Criterion B1	标准 B2 Criterion B2	综合 Comprehensive
栲树、南岭栲林 <i>Castanopsis fargesii</i> , <i>Castanopsis fordii</i> forest	14.0	1,781.90	4	NT/LC	CR	EN	CR
罗浮栲、杯果栲林 <i>Castanopsis fabri</i> , <i>Castanopsis calathiformis</i> forest	39.3	68,692.07	79	VU	NT/LC	NT/LC	VU
木果石栎、硬斗石栎林和薄片青冈、西藏石 栎林 <i>Lithocarpus xylocarpus</i> , <i>Lithocarpus</i> <i>hancei</i> and <i>Cyclobalanopsis lamellosa</i> , <i>Lithocarpus xizangensis</i> forest	3.6	28,240.17	128	NT/LC	VU	NT/LC	VU
小果栲、截果石栎林 <i>Castanopsis fleuryi</i> , <i>Lithocarpus truncatus</i> forest	7.8	24,089.57	39	NT/LC	VU	VU	VU
元江栲林 <i>Castanopsis orthacantha</i> forest	13.1	92,378.33	31	NT/LC	NT/LC	VU	VU
红花荷、滇桂木莲林 <i>Rhodoleia championii</i> , <i>Manglietia forrestii</i> forest	9.7	67,407.98	88	NT/LC	NT/LC	NT/LC	NT/LC
印栲、刺栲、红木荷林 <i>Castanopsis indica</i> , <i>Castanopsis hystrix</i> , <i>Schima wallichii</i> forest	11.8	344,892.50	675	NT/LC	NT/LC	NT/LC	NT/LC
川滇高山栎林 <i>Quercus aquifolioides</i> forest	1.8	6,9545.46	59	NT/LC	NT/LC	NT/LC	NT/LC
光叶高山栎、灰背栎林 <i>Quercus rehderiana</i> , <i>Quercus senescens</i> forest	12.0	1,861.28	8	NT/LC	CR	EN	CR
黄背栎林 <i>Quercus pannosa</i> forest	18.9	34.82	1	NT/LC	CR	CR	CR
帽斗栎林和长穗高山栎林 <i>Quercus</i> <i>guyavifolia</i> forest and <i>Quercus longispica</i> forest	0	–	–	NT/LC	–	–	NT/LC
高山榕、麻楝林 <i>Ficus altissima</i> , <i>Chukrasia</i> <i>tabularis</i> forest	82.1	51.76	2	CR	CR	CR	CR
木棉、楹树林 <i>Bombax ceiba</i> , <i>Albizia</i> <i>chinensis</i> forest	2.7	7,507.19	13	NT/LC	EN	EN	EN
滇木花生、云南蕈树林 <i>Madhuca pasquieri</i> , <i>Altingia yunnanensis</i> forest	58.2	8,071.67	21	EN	EN	VU	EN
千果榄仁、番龙眼林 <i>Terminalia myriocarpa</i> , <i>Pometia pinnata</i> forest	31.2	93,995.07	96	VU	NT/LC	NT/LC	VU
青皮、蝴蝶树林 <i>Vatica mangachapoi</i> , <i>Heritiera parvifolia</i> forest	55.5	738.80	3	EN	CR	EN	CR
网脉肉托果、滇楠、大蒜树林 <i>Semecarpus</i> <i>reticulatus</i> , <i>Machilus nanmu</i> , <i>Dysoxylum</i> <i>spicatum</i> forest	57.5	9,570.87	32	EN	EN	VU	EN
望天树林 <i>Parashorea chinensis</i> forest	5.5	120.87	4	NT/LC	CR	EN	CR
云南龙脑香、隐翼林 <i>Dipterocarpus retusus</i> , <i>Crypteronia paniculata</i> forest	62.5	59.19	2	EN	CR	CR	CR
慈竹林 <i>Bambusa emeiensis</i> forest	13.8	10.52	1	NT/LC	CR	CR	CR
箭竹丛 <i>Fargesia spathacea</i> scrub	9.5	200,973.10	45	NT/LC	NT/LC	VU	VU
毛竹林 <i>Phyllostachys edulis</i> forest	4.3	33.16	1	NT/LC	CR	CR	CR
牡竹林 <i>Dendrocalamus strictus</i> forest	26.8	5,151.33	30	NT/LC	EN	VU	EN
矮黄栌灌丛和云南山蚂蝗灌丛 <i>Cotinus nanus</i> scrub and <i>Desmodium yunnanense</i> scrub	14.0	9,387.37	10	NT/LC	EN	EN	EN
白刺花、小鞍叶羊蹄甲灌丛 <i>Sophora davidii</i> , <i>Bauhinia brachycarpa</i> var. <i>microphylla</i> scrub	11.4	78,214.08	61	NT/LC	NT/LC	NT/LC	NT/LC
白栎、短柄栎灌丛 <i>Quercus fabri</i> , <i>Quercus</i> <i>serrata</i> scrub	14.6	22.57	3	NT/LC	CR	EN	CR
岗松灌丛 <i>Baeckea frutescens</i> scrub	41.8	7,704.72	40	VU	EN	VU	EN
茅栗、白栎灌丛 <i>Castanea seguinii</i> , <i>Quercus</i> <i>fabri</i> scrub	54.1	111.08	4	EN	CR	EN	CR
榿木、南烛、映山红灌丛 <i>Loropetalum</i> <i>chinense</i> , <i>Vaccinium bracteatum</i> , <i>Rhododendron simsii</i> scrub	37.2	244.74	6	VU	CR	EN	CR
南烛、云南杨梅灌丛 <i>Vaccinium bracteatum</i> , <i>Myrica nana</i> scrub	19.2	390,254.70	1851	NT/LC	NT/LC	NT/LC	NT/LC
雀梅藤、小果蔷薇、火棘、龙须藤灌丛 <i>Sageretia thea</i> , <i>Rosa cymosa</i> , <i>Pyracantha</i> <i>fortuneana</i> , <i>Phanera championii</i> scrub	29.1	19,342.85	12	NT/LC	EN	EN	EN
栓皮栎、麻栎灌丛 <i>Quercus variabilis</i> , <i>Quercus acutissima</i> scrub	5.3	2,868.35	12	NT/LC	EN	EN	EN
桃金娘灌丛 <i>Rhodomyrtus tomentosa</i> scrub	51.8	1,442.49	7	EN	CR	EN	CR
铁仔、金花小檗灌丛 <i>Myrsine africana</i> , <i>Berberis wilsoniae</i> scrub	38.4	101,860.40	66	VU	NT/LC	NT/LC	VU
杨叶木姜子、盐肤木灌丛 <i>Litsea populifolia</i> , <i>Rhus chinensis</i> var. <i>roxburghii</i> scrub	19.8	13,798.65	102	NT/LC	EN	NT/LC	EN

群系 Formation	50 年面积损 失率 Area decline ratio of 50 years (%)	生境范围 Extent of occurrence (EOO) (km ²)	占地面积(10 km × 10 km 网格数) Area of occupancy (AOO) (No. of 10 km × 10 km grids)	受威胁等级评估结果 The evaluation results of threatened level			
				标准 A Criterion A	标准 B1 Criterion B1	标准 B2 Criterion B2	综合 Comprehensive
余甘子、糙叶水锦树灌丛 <i>Phyllanthus emblica</i> , <i>Wendlandia scabra</i> scrub	16.0	55,297.11	223	NT/LC	NT/LC	NT/LC	NT/LC
余甘子、水锦树灌丛 <i>Phyllanthus emblica</i> , <i>Wendlandia uvariifolia</i> scrub	7.8	30,774.54	66	NT/LC	VU	NT/LC	VU
余甘子灌丛 <i>Phyllanthus emblica</i> scrub	18.5	315,128.50	459	NT/LC	NT/LC	NT/LC	NT/LC
中平树灌丛 <i>Macaranga denticulata</i> scrub	17.9	57,823.60	120	NT/LC	NT/LC	NT/LC	NT/LC
中平树、云南银柴、毛桐灌丛 <i>Macaranga denticulata</i> , <i>Aporosa yunnanensis</i> , <i>Mallotus barbatus</i> scrub	42.9	24,065.71	39	VU	VU	VU	VU
竹叶椒、荚蒾灌丛 <i>Zanthoxylum armatum</i> , <i>Viburnum dilatatum</i> scrub	27.0	11,140.43	13	NT/LC	EN	EN	EN
竹叶椒、球核荚蒾灌丛 <i>Zanthoxylum armatum</i> , <i>Viburnum propinquum</i> scrub	12.7	449.56	8	NT/LC	CR	EN	CR
竹叶椒、樟叶荚蒾灌丛 <i>Zanthoxylum armatum</i> , <i>Viburnum cinnamomifolium</i> scrub	42.5	19,065.86	106	VU	EN	NT/LC	EN
仙人掌、金合欢灌丛 <i>Opuntia dilleanii</i> , <i>Vachellia farnesiana</i> scrub	1.7	225.61	6	NT/LC	CR	EN	CR
绢毛蔷薇、匍匐栒子灌丛 <i>Rosa sericea</i> , <i>Cotoneaster adpressus</i> scrub	2.8	20.37	2	NT/LC	CR	CR	CR
矮高山栎灌丛 <i>Quercus monimotricha</i> scrub	17.3	5433.63	8	NT/LC	EN	EN	EN
草原杜鹃灌丛 <i>Rhododendron telmateium</i> scrub	0.0	–	–	NT/LC	–	–	NT/LC
淡黄杜鹃灌丛 <i>Rhododendron flavidum</i> scrub	0.2	8.54	1	NT/LC	CR	CR	CR
黄毛杜鹃、金背杜鹃灌丛 <i>Rhododendron rufum</i> , <i>Rhododendron clementinae</i> subsp. <i>aureodorsale</i> scrub	1.0	98.26	3	NT/LC	CR	EN	CR
马缨花杜鹃灌丛 <i>Rhododendron delavayi</i> scrub	0.6	414.46	3	NT/LC	CR	EN	CR
腺房杜鹃灌丛 <i>Rhododendron adenogynum</i> scrub	5.6	102,089.20	441	NT/LC	NT/LC	NT/LC	NT/LC
雪层杜鹃、髯花杜鹃灌丛 <i>Rhododendron nivale</i> , <i>Rhododendron anthopogon</i> scrub	0.1	10,323.64	42	NT/LC	EN	VU	EN
腋花杜鹃灌丛 <i>Rhododendron racemosum</i> scrub	4.1	201,791.50	236	NT/LC	NT/LC	NT/LC	NT/LC
密枝杜鹃灌丛 <i>Rhododendron fastigiatum</i> scrub	0.4	1,4667.48	41	NT/LC	EN	VU	EN
白茅、密序野古草草 <i>Imperata cylindrica</i> var. <i>major</i> , <i>Arundinella bengalensis</i> grassland	24.8	430,706.40	900	NT/LC	NT/LC	NT/LC	NT/LC
白茅、扭黄茅、龙须草草 <i>Imperata cylindrica</i> var. <i>major</i> , <i>Heteropogon contortus</i> , <i>Silene linearifolia</i> grassland	11.6	65,585.51	26	NT/LC	NT/LC	VU	VU
刺芒野古草、云南裂稃草草 <i>Arundinella setosa</i> , <i>Schizachyrium delavayi</i> grassland	18.0	443,920.60	1469	NT/LC	NT/LC	NT/LC	NT/LC
刺芒野古草草 <i>Arundinella setosa</i> grassland	19.3	390,856.20	1307	NT/LC	NT/LC	NT/LC	NT/LC
金茅、野古草、青香茅草 <i>Eulalia speciosa</i> , <i>Arundinella hirta</i> , <i>Cymbopogon mekongensis</i> grassland	5.5	880.70	7	NT/LC	CR	EN	CR
类芦、棕叶芦、斑茅草 <i>Neyraudia reynaudiana</i> , <i>Thysanolaena latifolia</i> , <i>Saccharum arundinaceum</i> grassland	28.8	324,814.30	99	NT/LC	NT/LC	NT/LC	NT/LC
芒草、野古草、金茅草 <i>Miscanthus sinensis</i> , <i>Arundinella hirta</i> , <i>Eulalia speciosa</i> grassland	23.1	6,012.65	6	NT/LC	EN	EN	EN
芒草草 <i>Miscanthus sinensis</i> grassland	38.6	57.40	2	VU	CR	CR	CR
扭黄茅、孔颖草、芸香草草 <i>Heteropogon contortus</i> , <i>Bothriochloa pertusa</i> , <i>Cymbopogon distans</i> grassland	23.1	231,305.20	187	NT/LC	NT/LC	NT/LC	NT/LC
扭黄茅、龙须草、白茅草 <i>Heteropogon contortus</i> , <i>Eulaliopsis binata</i> , <i>Imperata cylindrica</i> var. <i>major</i> grassland	15.5	305,474.80	69	NT/LC	NT/LC	NT/LC	NT/LC
扭黄茅草 <i>Heteropogon contortus</i> grassland	23.9	9.41	1	NT/LC	CR	CR	CR
穗序野古草草 <i>Arundinella hookeri</i> grassland	14.1	410,176.40	613	NT/LC	NT/LC	NT/LC	NT/LC
羊茅、野青茅、杂类草草甸 <i>Festuca ovina</i> , <i>Deyeuxia pyramidalis</i> , forb meadow	7.0	253,446.50	434	NT/LC	NT/LC	NT/LC	NT/LC
小嵩草高寒草甸 <i>Kobresia pygmaea</i> meadow	0.0	–	–	NT/LC	–	–	NT/LC

群系 Formation	50 年面积损 失率 Area decline ratio of 50 years (%)	生境范围 Extent of occurrence (EOO) (km ²)	占地面积(10 km × 10 km 网格数) Area of occupancy (AOO) (No. of 10 km × 10 km grids)	受威胁等级评估结果 The evaluation results of threatened level			
				标准 A Criterion A	标准 B1 Criterion B1	标准 B2 Criterion B2	综合 Comprehensive
囊状嵩草、杂类草高寒草甸 <i>Kobresia fragilis</i> , forb alpine meadow	0.1	88,719.39	223	NT/LC	NT/LC	NT/LC	NT/LC
鳞叶点地梅垫状植被 <i>Androsace squarrosula</i> cushion vegetation	0.0	–	–	NT/LC	–	–	NT/LC
风毛菊、红景天、垂头菊稀疏植被 <i>Saussurea japonica</i> , <i>Rhodiola rosea</i> , <i>Cremanthodium reniforme</i> sparse vegetation	0.01	23,571.06	67	NT/LC	VU	NT/LC	VU
水母雪莲、凤毛菊稀疏植被 <i>Saussurea medusa</i> , <i>Saussurea glomerata</i> sparse vegetation	0.0	–	–	NT/LC	–	–	NT/LC

附录5 各群系保护价值数据统计(无量纲化)

Appendix 5 Conservation value data statistics of each formations (dimensionless)

群系 Formation	濒危保护物种丰富度 Endangered species richness	冠层高度 Canopy height	碳储量 Carbon storage	综合保护价值指数 Comprehensive conservation value index	保护价值 Conservation value
含榿木、映山红的马尾松林 <i>Pinus massoniana</i> forest with <i>Loropetalum chinense</i> , <i>Rhododendron simsii</i>	0.94	0.36	0.45	0.69	极高 Extremely high
华山松、川滇高山栎、干香柏林 <i>Pinus armandii</i> , <i>Quercus aquifolioides</i> , <i>Cupressus duclouxiana</i> forest	0.01	0.30	0.56	0.19	低 Low
华山松、滇青冈林 <i>Pinus armandii</i> , <i>Quercus schottkyana</i> forest	0.04	0.24	0.76	0.22	中 Moderate
杉木林 <i>Cunninghamia lanceolata</i> forest	0.28	0.28	0.51	0.32	中 Moderate
思茅松林 <i>Pinus kesiya</i> var. <i>langbianensis</i> forest	0.16	0.53	0.82	0.38	高 High
云南松、矮高山栎林 <i>Pinus yunnanensis</i> , <i>Quercus monimotricha</i> forest	0.07	0.36	0.60	0.25	中 Moderate
云南松、滇油杉、黄毛青冈林 <i>Pinus yunnanensis</i> , <i>Keteleeria evelyniana</i> , <i>Cyclobalanopsis delavayi</i> forest	0.05	0.25	0.66	0.22	中 Moderate
云南松、截果石栎、红木荷林 <i>Pinus yunnanensis</i> , <i>Lithocarpus truncatus</i> , <i>Schima wallichii</i> forest	0.14	0.34	0.66	0.29	中 Moderate
云南松林 <i>Pinus yunnanensis</i> forest	0.01	0.19	0.71	0.19	低 Low
含南烛、碎米花的云南松林 <i>Pinus yunnanensis</i> forest with <i>Vaccinium bracteatum</i> , <i>Rhododendron spiciferum</i>	0.68	0.00	0.00	0.36	高 High
含白栎、短柄栎林的云南松林 <i>Pinus yunnanensis</i> forest with <i>Quercus fabri</i> , <i>Quercus serrata</i>	0.00	0.26	0.71	0.20	低 Low
苍山冷杉林 <i>Abies delavayi</i> forest	0.16	0.49	0.83	0.37	高 High
川滇冷杉林 <i>Abies forrestii</i> forest	0.30	0.40	0.59	0.38	高 High
川西云杉林 <i>Picea likiangensis</i> var. <i>rubescens</i> forest	0.11	0.48	0.63	0.31	中 Moderate
大果红杉林 <i>Larix potaninii</i> var. <i>macrocarpa</i> forest	0.13	0.44	0.44	0.27	中 Moderate
高山松林 <i>Pinus densata</i> forest	0.06	0.43	0.75	0.28	中 Moderate
丽江云杉林 <i>Picea likiangensis</i> forest	0.08	0.47	0.83	0.32	中 Moderate
鳞皮冷杉林 <i>Abies squamata</i> forest	0.07	0.45	0.63	0.28	中 Moderate
喜马拉雅冷杉林 <i>Abies pindrow</i> forest	0.17	0.66	0.80	0.42	高 High
油麦吊杉林 <i>Picea brachytyla</i> var. <i>complanata</i> forest	0.14	0.54	0.77	0.37	高 High
云南铁杉林 <i>Tsuga dumosa</i> forest	0.22	0.47	0.85	0.40	高 High
长苞冷杉林 <i>Abies georgei</i> forest	0.02	0.54	0.73	0.30	中 Moderate
紫果云杉林 <i>Picea purpurea</i> forest	0.11	0.33	0.34	0.21	中 Moderate
云南铁杉、滇木荷林 <i>Tsuga dumosa</i> , <i>Schima sinensis</i> forest	0.18	0.41	0.85	0.36	高 High
云南铁杉、高山栎林 <i>Tsuga dumosa</i> , <i>Quercus semecarpifolia</i> forest	0.17	0.55	0.90	0.41	高 High
云南铁杉、桦、槭林 <i>Tsuga dumosa</i> , <i>Betula</i> spp., <i>Acer</i> spp. forest	0.15	0.49	0.87	0.37	高 High
云南铁杉、水青树林 <i>Tsuga dumosa</i> , <i>Tetracentron sinense</i> forest	0.25	0.76	0.80	0.49	高 High
栓皮栎、麻栎林 <i>Quercus variabilis</i> , <i>Quercus acutissima</i> forest	0.26	0.38	0.44	0.32	中 Moderate
包石栎林 <i>Lithocarpus cleistocarpus</i> forest	0.08	0.31	0.52	0.22	中 Moderate
多变石栎、银木荷林 <i>Lithocarpus variolosus</i> , <i>Schima argentea</i> forest	0.18	0.47	1.00	0.41	高 High
峨眉栲林 <i>Castanopsis platyacantha</i> forest	0.12	0.43	0.55	0.29	中 Moderate
高山栲林、黄毛青冈林和滇青冈林 <i>Castanopsis delavayi</i> forest, <i>Cyclobalanopsis delavayi</i> forest, <i>Quercus schottkyana</i> forest	0.18	0.48	0.88	0.39	高 High
栲树、南岭栲林 <i>Castanopsis fargesii</i> , <i>Castanopsis fordii</i> forest	0.18	0.40	0.58	0.32	中 Moderate
罗浮栲、杯果栲林 <i>Castanopsis fabri</i> , <i>Castanopsis calathiformis</i> forest	0.25	0.60	0.71	0.43	高 High
木果石栎、硬斗石栎林和薄片青冈、西藏石栎林 <i>Lithocarpus xylocarpus</i> , <i>Lithocarpus hancei</i> and <i>Cyclobalanopsis lamellosa</i> , <i>Lithocarpus xizangensis</i> forest	0.07	0.49	0.82	0.32	中 Moderate
小果栲、截果石栎林 <i>Castanopsis fleuryi</i> , <i>Lithocarpus truncatus</i> forest	0.14	0.54	0.87	0.38	高 High
元江栲林 <i>Castanopsis orthacantha</i> forest	0.26	0.33	0.78	0.37	高 High

群系 Formation	濒危保护物种丰富度 Endangered species richness	冠层高度 Canopy height	碳储量 Carbon storage	综合保护价值指数 Comprehensive conservation value index	保护价值 Conservation value
红花荷、滇桂木莲林 <i>Rhodoleia championii</i> , <i>Manglietia forrestii</i> forest	0.19	0.59	0.93	0.43	高 High
印栲、刺栲、红木荷林 <i>Castanopsis indica</i> , <i>Castanopsis hystrix</i> , <i>Schima wallichii</i> forest	0.20	0.71	0.97	0.48	高 High
川滇高山栎林 <i>Quercus aquifolioides</i> forest	0.06	0.49	0.76	0.31	中 Moderate
光叶高山栎、灰背栎林 <i>Quercus rehderiana</i> , <i>Quercus senescens</i> forest	0.04	0.33	0.38	0.18	低 Low
黄背栎林 <i>Quercus pannosa</i> forest	0.12	0.00	0.40	0.13	低 Low
帽斗栎林和长穗高山栎林 <i>Quercus guyavifolia</i> forest and <i>Quercus longispica</i> forest	0.09	0.51	0.91	0.35	高 High
高山榕、麻楝林 <i>Ficus altissima</i> , <i>Chukrasia tabularis</i> forest	0.94	0.00	0.82	0.65	极高 Extremely High
木棉、楹树林 <i>Bombax ceiba</i> , <i>Albizia chinensis</i> forest	0.37	0.68	0.63	0.50	高 High
滇木花生、云南蕈树林 <i>Madhuca pasquieri</i> , <i>Altingia yunnanensis</i> forest	0.36	0.56	0.67	0.47	高 High
千果榄仁、番龙眼林 <i>Terminalia myriocarpa</i> , <i>Pometia pinnata</i> forest	0.27	0.72	0.84	0.50	高 High
青皮、蝴蝶树林 <i>Vatica mangachapoi</i> , <i>Heritiera parvifolia</i> forest	0.59	1.00	0.84	0.75	极高 Extremely High
网脉肉托果、滇楠、大蒜树林 <i>Semecarpus reticulatus</i> , <i>Machilus nanmu</i> , <i>Dysoxylum spicatum</i> forest	0.33	0.79	0.88	0.56	极高 Extremely High
望天树林 <i>Parashorea chinensis</i> forest	0.69	0.93	0.84	0.78	极高 Extremely High
云南龙脑香、隐翼林 <i>Dipterocarpus retusus</i> , <i>Crypteronia paniculata</i> forest	0.79	0.34	0.35	0.58	极高 Extremely High
慈竹林 <i>Bambusa emeiensis</i> forest	0.69	0.42	0.63	0.61	极高 Extremely High
箭竹丛 <i>Fargesia spathacea</i> scrub	0.18	0.45	0.77	0.36	高 High
毛竹林 <i>Phyllostachys edulis</i> forest	0.58	0.00	0.22	0.35	高 High
牡竹林 <i>Dendrocalamus strictus</i> forest	0.38	0.77	0.81	0.57	极高 Extremely High
矮黄栌灌丛和云南山蚂蝗灌丛 <i>Cotinus nanus</i> scrub and <i>Desmodium yunnanense</i> scrub	0.16	0.36	0.41	0.26	中 Moderate
白刺花、小鞍叶羊蹄甲灌丛 <i>Sophora davidii</i> , <i>Bauhinia brachycarpa</i> var. <i>microphylla</i> scrub	0.10	0.00	0.04	0.06	低 Low
白栎、短柄栎灌丛 <i>Quercus fabri</i> , <i>Quercus serrata</i> scrub	0.12	0.00	0.46	0.15	低 Low
岗松灌丛 <i>Baeckea frutescens</i> scrub	0.11	0.54	0.46	0.30	中 Moderate
茅栗、白栎灌丛 <i>Castanea seguinii</i> , <i>Quercus fabri</i> scrub	0.02	0.00	0.32	0.07	低 Low
椴木、南烛、映山红灌丛 <i>Loropetalum chinense</i> , <i>Vaccinium bracteatum</i> , <i>Rhododendron simsii</i> scrub	0.30	0.00	0.62	0.27	中 Moderate
南烛、云南杨梅灌丛 <i>Vaccinium bracteatum</i> , <i>Myrica nana</i> scrub	0.10	0.36	0.64	0.27	中 Moderate
雀梅藤、小果蔷薇、火棘、龙须藤灌丛 <i>Sageretia thea</i> , <i>Rosa cymosa</i> , <i>Pyracantha fortuneana</i> , <i>Phanera championii</i> scrub	0.39	0.42	0.29	0.38	高 High
栓皮栎、麻栎灌丛 <i>Quercus variabilis</i> , <i>Quercus acutissima</i> scrub	0.54	0.45	0.42	0.49	高 High
桃金娘灌丛 <i>Rhodomyrtus tomentosa</i> scrub	0.21	0.49	0.47	0.34	中 Moderate
铁仔、金花小檗灌丛 <i>Myrsine africana</i> , <i>Berberis wilsoniae</i> scrub	0.12	0.41	0.46	0.26	中 Moderate
杨叶木姜子、盐肤木灌丛 <i>Litsea populifolia</i> , <i>Rhus chinensis</i> var. <i>roxburghii</i> scrub	0.02	0.32	0.50	0.19	低 Low
余甘子、糙叶水锦树灌丛 <i>Phyllanthus emblica</i> , <i>Wendlandia scabra</i> scrub	0.20	0.66	0.83	0.44	高 High
余甘子、水锦树灌丛 <i>Phyllanthus emblica</i> , <i>Wendlandia uvariifolia</i> scrub	0.17	0.61	0.79	0.40	高 High
余甘子灌丛 <i>Phyllanthus emblica</i> scrub	0.16	0.59	0.73	0.39	高 High
中平树灌丛 <i>Macaranga denticulata</i> scrub	0.30	0.71	0.87	0.52	极高 Extremely High
中平树、云南银柴、毛桐灌丛 <i>Macaranga denticulata</i> , <i>Aporosa yunnanensis</i> , <i>Mallotus barbatus</i> scrub	0.32	0.72	0.75	0.51	高 High
竹叶椒、荚蒾灌丛 <i>Zanthoxylum armatum</i> , <i>Viburnum dilatatum</i> scrub	0.06	0.39	0.40	0.21	中 Moderate
竹叶椒、球核荚蒾灌丛 <i>Zanthoxylum armatum</i> , <i>Viburnum propinquum</i> scrub	0.16	0.50	0.43	0.30	中 Moderate
竹叶椒、樟叶荚蒾灌丛 <i>Zanthoxylum armatum</i> , <i>Viburnum cinnamomifolium</i> scrub	0.17	0.39	0.42	0.28	中 Moderate

群系 Formation	濒危保护物种丰富度 Endangered species richness	冠层高度 Canopy height	碳储量 Carbon storage	综合保护价值指数 Comprehensive conservation value index	保护价值 Conservation value
仙人掌、金合欢灌丛 <i>Opuntia dillenii</i> , <i>Vachellia farnesiana</i> scrub	0.20	0.00	0.01	0.11	低 Low
绢毛蔷薇、匍匐栒子灌丛 <i>Rosa sericea</i> , <i>Cotoneaster adpressus</i> scrub	0.38	0.44	0.04	0.34	高 High
矮高山栎灌丛 <i>Quercus monimotricha</i> scrub	0.12	0.22	0.41	0.20	中 Moderate
草原杜鹃灌丛 <i>Rhododendron telmateium</i> scrub	0.32	0.00	0.09	0.18	低 Low
淡黄杜鹃灌丛 <i>Rhododendron flavidum</i> scrub	0.50	0.45	0.76	0.53	极高 Extremely High
黄毛杜鹃、金背杜鹃灌丛 <i>Rhododendron rufum</i> , <i>Rhododendron clementinae</i> subsp. <i>aureodorsale</i> scrub	0.08	0.49	0.63	0.29	中 Moderate
马缨花杜鹃灌丛 <i>Rhododendron delavayi</i> scrub	0.16	0.38	0.54	0.29	中 Moderate
腺房杜鹃灌丛 <i>Rhododendron adenogynum</i> scrub	0.15	0.42	0.68	0.32	中 Moderate
雪层杜鹃、髯花杜鹃灌丛 <i>Rhododendron nivale</i> , <i>Rhododendron anthopogon</i> scrub	0.06	0.00	0.06	0.05	低 Low
腋花杜鹃灌丛 <i>Rhododendron racemosum</i> scrub	0.17	0.46	0.77	0.36	高 High
密枝杜鹃灌丛 <i>Rhododendron fastigiatum</i> scrub	0.08	0.50	0.41	0.26	中 Moderate
白茅、密序野古草草从 <i>Imperata cylindrica</i> var. <i>major</i> , <i>Arundinella bengalensis</i> grassland	0.15	0.48	0.60	0.32	中 Moderate
白茅、扭黄茅、龙须草草从 <i>Imperata cylindrica</i> var. <i>major</i> , <i>Heteropogon contortus</i> , <i>Silene linearifolia</i> grassland	0.39	0.65	0.99	0.57	极高 Extremely High
刺芒野古草、云南裂稃草草从 <i>Arundinella setosa</i> , <i>Schizachyrium delavayi</i> grassland	0.11	0.28	0.53	0.23	中 Moderate
刺芒野古草草从 <i>Arundinella setosa</i> grassland	0.13	0.46	0.72	0.33	中 Moderate
金茅、野古草、青香茅草从 <i>Eulalia speciosa</i> , <i>Arundinella hirta</i> , <i>Cymbopogon mekongensis</i> grassland	0.31	0.49	0.34	0.37	高 High
类芦、棕叶芦、斑茅草从 <i>Neyraudia reynaudiana</i> , <i>Thysanolaena latifolia</i> , <i>Saccharum arundinaceum</i> grassland	0.26	0.58	0.66	0.43	高 High
芒草、野古草、金茅草从 <i>Miscanthus sinensis</i> , <i>Arundinella hirta</i> , <i>Eulalia speciosa</i> grassland	0.42	0.35	0.67	0.44	高 High
芒草草从 <i>Miscanthus sinensis</i> grassland	0.05	0.00	0.01	0.03	低 Low
扭黄茅、孔颖草、芸香草草从 <i>Heteropogon contortus</i> , <i>Bothriochloa pertusa</i> , <i>Cymbopogon distans</i> grassland	0.14	0.00	0.21	0.11	低 Low
扭黄茅、龙须草、白茅草从 <i>Heteropogon contortus</i> , <i>Eulaliopsis binata</i> , <i>Imperata cylindrica</i> var. <i>major</i> grassland	0.26	0.00	0.33	0.20	低 Low
扭黄茅草从 <i>Heteropogon contortus</i> grassland	1.00	0.52	0.50	0.77	极高 Extremely High
穗序野古草草从 <i>Arundinella hookeri</i> grassland	0.14	0.33	0.55	0.26	中 Moderate
羊茅、野青茅、杂类草草甸 <i>Festuca ovina</i> , <i>Deyeuxia pyramidalis</i> , forb meadow	0.18	0.38	0.54	0.30	中 Moderate
小嵩草高寒草甸 <i>Kobresia pygmaea</i> meadow	0.26	0.59	0.00	0.31	中 Moderate
囊状嵩草、杂类草高寒草甸 <i>Kobresia fragilis</i> , forb alpine meadow	0.11	0.46	0.44	0.27	中 Moderate
鳞叶点地梅垫状植被 <i>Androsace squarrosula</i> cushion vegetation	0.17	0.32	0.63	0.29	中 Moderate
风毛菊、红景天、垂头菊稀疏植被 <i>Saussurea japonica</i> , <i>Rhodiola rosea</i> , <i>Cremanthodium reniforme</i> sparse vegetation	0.05	0.00	0.01	0.03	低 Low
水母雪莲、风毛菊稀疏植被 <i>Saussurea medusa</i> , <i>Saussurea glomerata</i> sparse vegetation	0.07	0.00	0.01	0.04	低 Low

附录6 各群系的保护价值-受威胁等级组合及推荐保护类型

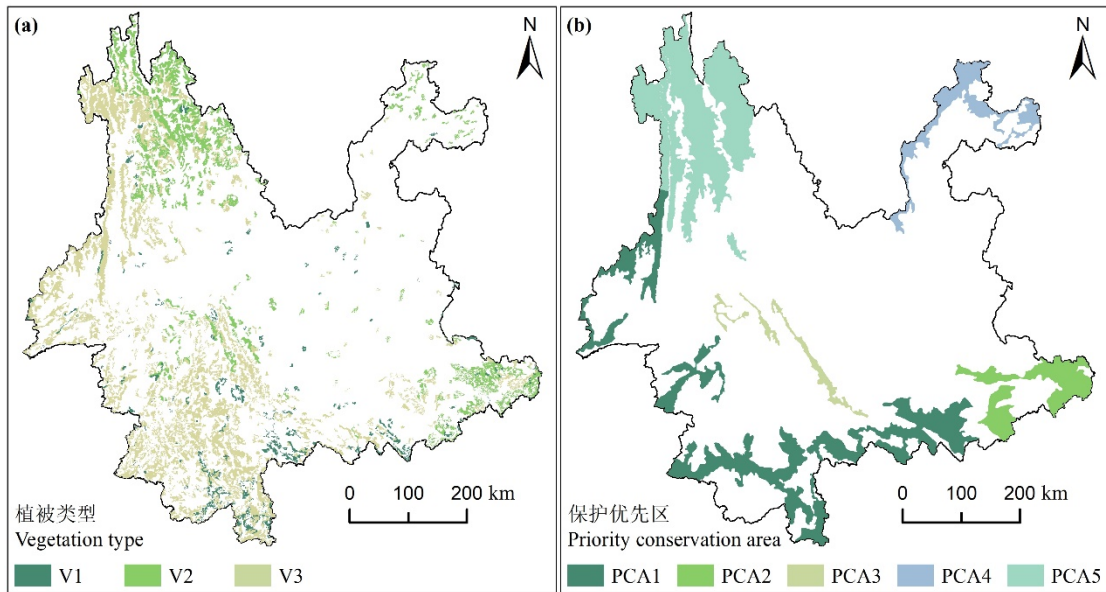
Appendix 6 The conservation value-threatened level combination and recommended conservation type of each formations

群系 Formation	保护价值 Conservation Value	最高受威胁等级 highest threatened level	保护价值-受威胁等级组合 Conservation value-threatened level combination	推荐保护类型 recommended conservation type
含櫟木、映山红的马尾松林 <i>Pinus massoniana</i> forest with <i>Loropetalum chinense</i> , <i>Rhododendron simsii</i>	极高 Extremely High conservation value (EHCV)	极危 Critically Endangered (CR)	EHCV-CR	优先保护 Priority conservation
华山松、川滇高山栎、干香柏林 <i>Pinus armandii</i> , <i>Quercus aquifolioides</i> , <i>Cupressus duclouxiana</i> forest	低保护价值 Low conservation value (LCV)	濒危 Endangered (EN)	LCV-EN	一般保护 General conservation
华山松、滇青冈林 <i>Pinus armandii</i> , <i>Quercus schottkyana</i> forest	中等保护价值 Moderate conservation value (MCV)	易危 Vulnerable (VU)	MCV-VU	次优先保护 Secondary conservation
杉木林 <i>Cunninghamia lanceolata</i> forest	MCV	VU	MCV-VU	次优先保护 Secondary conservation
思茅松林 <i>Pinus kesiya</i> var. <i>langbianensis</i> forest	高保护价值 High conservation value (HCV)	近危/无危 Near Threatened (NT)/Least Concern (LC)	HCV-NT/LC	预先保护 Proactive conservation
云南松、矮高山栎林 <i>Pinus yunnanensis</i> , <i>Quercus monimotricha</i> forest	MCV	NT/LC	MCV-NT/LC	一般保护 General conservation
云南松、滇油杉、黄毛青冈林 <i>Pinus yunnanensis</i> , <i>Keteleeria evelyniana</i> , <i>Cyclobalanopsis delavayi</i> forest	MCV	NT/LC	MCV-NT/LC	一般保护 General conservation
云南松、截果石栎、红木荷林 <i>Pinus yunnanensis</i> , <i>Lithocarpus truncatus</i> , <i>Schima wallichii</i> forest	MCV	NT/LC	MCV-NT/LC	一般保护 General conservation
云南松林 <i>Pinus yunnanensis</i> forest	LCV	EN	LCV-EN	一般保护 General conservation
含南烛、碎米花的云南松林 <i>Pinus yunnanensis</i> forest with <i>Vaccinium bracteatum</i> , <i>Rhododendron spiciferum</i>	HCV	CR	HCV-CR	优先保护 Priority conservation
含白栎、短柄栎的云南松林 <i>Pinus yunnanensis</i> forest with <i>Quercus fabri</i> , <i>Quercus serrata</i>	LCV	CR	LCV-CR	一般保护 General conservation
苍山冷杉林 <i>Abies delavayi</i> forest	HCV	NT/LC	HCV-NT/LC	预先保护 Proactive conservation
川滇冷杉林 <i>Abies forrestii</i> forest	HCV	CR	HCV-CR	优先保护 Priority conservation
川西云杉林 <i>Picea likiangensis</i> var. <i>rubescens</i> forest	MCV	EN	MCV-EN	次优先保护 Secondary conservation
大果红杉林 <i>Larix potaninii</i> var. <i>macrocarpa</i> forest	MCV	EN	MCV-EN	次优先保护 Secondary conservation
高山松林 <i>Pinus densata</i> forest	MCV	VU	MCV-VU	次优先保护 Secondary conservation
丽江云杉林 <i>Picea likiangensis</i> forest	MCV	EN	MCV-EN	次优先保护 Secondary conservation
鳞皮冷杉林 <i>Abies squamata</i> forest	MCV	CR	MCV-CR	次优先保护 Secondary conservation
喜马拉雅冷杉林 <i>Abies pindrow</i> forest	HCV	NT/LC	HCV-NT/LC	预先保护 Proactive conservation
油麦吊杉林 <i>Picea brachytyla</i> var. <i>complanata</i> forest	HCV	EN	HCV-EN	优先保护 Priority conservation
云南铁杉林 <i>Tsuga dumosa</i> forest	HCV	NT/LC	HCV-NT/LC	预先保护 Proactive conservation
长苞冷杉林 <i>Abies georgei</i> forest	MCV	VU	MCV-VU	次优先保护 Secondary conservation
紫果云杉林 <i>Picea purpurea</i> forest	MCV	CR	MCV-CR	次优先保护 Secondary conservation
云南铁杉、滇木荷林 <i>Tsuga dumosa</i> , <i>Schima sinensis</i> forest	HCV	EN	HCV-EN	优先保护 Priority conservation
云南铁杉、高山栎林 <i>Tsuga dumosa</i> , <i>Quercus semecarpifolia</i> forest	HCV	NT/LC	HCV-NT/LC	预先保护 Proactive conservation
云南铁杉、桦、槭林 <i>Tsuga dumosa</i> , <i>Betula</i> spp., <i>Acer</i> spp. forest	HCV	CR	HCV-CR	优先保护 Priority conservation
云南铁杉、水青树林 <i>Tsuga dumosa</i> , <i>Tetracentron sinense</i> forest	HCV	NT/LC	HCV-NT/LC	预先保护 Proactive conservation
栓皮栎、麻栎林 <i>Quercus variabilis</i> , <i>Quercus acutissima</i> forest	MCV	EN	MCV-EN	次优先保护 Secondary conservation
包石栎林 <i>Lithocarpus cleistocarpus</i> forest	MCV	VU	MCV-VU	次优先保护 Secondary conservation
多变石栎、银木荷林 <i>Lithocarpus variolosus</i> , <i>Schima argentea</i> forest	HCV	NT/LC	HCV-NT/LC	预先保护 Proactive conservation

群系 Formation	保护价值 Conservation Value	最高受威胁等级 highest threatened level	保护价值-受威胁等级组合 Conservation value-threatened level combination	推荐保护类型 recommended conservation type
峨眉栲林 <i>Castanopsis platyacantha</i> forest	MCV	CR	MCV-CR	次优先保护 Secondary conservation
高山栲林、黄毛青冈林和滇青冈林 <i>Castanopsis delavayi</i> forest, <i>Cyclobalanopsis delavayi</i> forest, <i>Quercus schottkyana</i> forest	HCV	NT/LC	HCV-NT/LC	预先保护 Proactive conservation
栲树、南岭栲林 <i>Castanopsis fargesii</i> , <i>Castanopsis fordii</i> forest	MCV	CR	MCV-CR	次优先保护 Secondary conservation
罗浮栲、杯果栲林 <i>Castanopsis fabri</i> , <i>Castanopsis calathiformis</i> forest	HCV	VU	HCV-VU	优先保护 Priority conservation
木果石栎、硬斗石栎林和薄片青冈、西藏石栎林 <i>Lithocarpus xylocarpus</i> , <i>Lithocarpus hancei</i> and <i>Cyclobalanopsis lamellosa</i> , <i>Lithocarpus xizangensis</i> forest	MCV	VU	MCV-VU	次优先保护 Secondary conservation
小果栲、截果石栎林 <i>Castanopsis fleuryi</i> , <i>Lithocarpus truncatus</i> forest	HCV	VU	HCV-VU	优先保护 Priority conservation
元江栲林 <i>Castanopsis orthacantha</i> forest	HCV	VU	HCV-VU	优先保护 Priority conservation
红花荷、滇桂木莲林 <i>Rhodoleia championii</i> , <i>Manglietia forrestii</i> forest	HCV	NT/LC	HCV-NT/LC	预先保护 Proactive conservation
印栲、刺栲、红木荷林 <i>Castanopsis indica</i> , <i>Castanopsis hystrix</i> , <i>Schima wallichii</i> forest	HCV	NT/LC	HCV-NT/LC	预先保护 Proactive conservation
川滇高山栎林 <i>Quercus aquifolioides</i> forest	MCV	NT/LC	MCV-NT/LC	一般保护 General conservation
光叶高山栎、灰背栎林 <i>Quercus rehderiana</i> , <i>Quercus senescens</i> forest	LCV	CR	LCV-CR	一般保护 General conservation
黄背栎林 <i>Quercus pannosa</i> forest	LCV	CR	LCV-CR	一般保护 General conservation
帽斗栎林和长穗高山栎林 <i>Quercus guyavifolia</i> forest and <i>Quercus longispica</i> forest	HCV	NT/LC	HCV-NT/LC	预先保护 Proactive conservation
高山榕、麻楝林 <i>Ficus altissima</i> , <i>Chukrasia tabularis</i> forest	EHCV	CR	EHCV-CR	优先保护 Priority conservation
木棉、楹树林 <i>Bombax ceiba</i> , <i>Albizia chinensis</i> forest	HCV	EN	HCV-EN	优先保护 Priority conservation
滇木花生、云南蕈树林 <i>Madhuca pasquieri</i> , <i>Altingia yunnanensis</i> forest	HCV	EN	HCV-EN	优先保护 Priority conservation
千果榄仁、番龙眼林 <i>Terminalia myriocarpa</i> , <i>Pometia pinnata</i> forest	HCV	VU	HCV-VU	优先保护 Priority conservation
青皮、蝴蝶树林 <i>Vatica mangachapoi</i> , <i>Heritiera parvifolia</i> forest	EHCV	CR	EHCV-CR	优先保护 Priority conservation
网脉肉托果、滇楠、大蒜树林 <i>Semecarpus reticulatus</i> , <i>Machilus nanmu</i> , <i>Dysoxylum spicatum</i> forest	EHCV	EN	EHCV-EN	优先保护 Priority conservation
望天树林 <i>Parashorea chinensis</i> forest	EHCV	CR	EHCV-CR	优先保护 Priority conservation
云南龙脑香、隐翼林 <i>Dipterocarpus retusus</i> , <i>Crypteronia paniculata</i> forest	EHCV	CR	EHCV-CR	优先保护 Priority conservation
慈竹林 <i>Bambusa emeiensis</i> forest	EHCV	CR	EHCV-CR	优先保护 Priority conservation
箭竹丛 <i>Fargesia spathacea</i> scrub	HCV	VU	HCV-VU	优先保护 Priority conservation
毛竹林 <i>Phyllostachys edulis</i> forest	HCV	CR	HCV-CR	优先保护 Priority conservation
牡竹林 <i>Dendrocalamus strictus</i> forest	EHCV	EN	EHCV-EN	优先保护 Priority conservation
矮黄栌灌丛和云南山蚂蝗灌丛 <i>Cotinus nanus</i> scrub and <i>Desmodium yunnanense</i> scrub	MCV	EN	MCV-EN	次优先保护 Secondary conservation
白刺花、小鞍叶羊蹄甲灌丛 <i>Sophora davidii</i> , <i>Bauhinia brachycarpa</i> var. <i>microphylla</i> scrub	LCV	NT/LC	LCV-NT/LC	一般保护 General conservation
白栎、短柄栎灌丛 <i>Quercus fabri</i> , <i>Quercus serrata</i> scrub	LCV	CR	LCV-CR	一般保护 General conservation
岗松灌丛 <i>Baekkea frutescens</i> scrub	MCV	EN	MCV-EN	次优先保护 Secondary conservation
茅栗、白栎灌丛 <i>Castanea seguinii</i> , <i>Quercus fabri</i> scrub	LCV	CR	LCV-CR	一般保护 General conservation
檵木、南烛、映山红灌丛 <i>Loropetalum chinense</i> , <i>Vaccinium bracteatum</i> , <i>Rhododendron simsii</i> scrub	MCV	CR	MCV-CR	次优先保护 Secondary conservation

群系 Formation	保护价值 Conservation Value	最高受威胁等级 highest threatened level	保护价值-受威胁等级组 合 Conservation value- threatened level combination	推荐保护类型 recommended conservation type
南烛、云南杨梅灌丛 <i>Vaccinium bracteatum</i> , <i>Myrica nana</i> scrub	MCV	NT/LC	MCV-NT/LC	一般保护 General conservation
雀梅藤、小果蔷薇、火棘、龙须藤灌丛 <i>Sageretia thea</i> , <i>Rosa cymosa</i> , <i>Pyracantha fortuneana</i> , <i>Phanera championii</i> scrub	HCV	EN	HCV-EN	优先保护 Priority conservation
栓皮栎、麻栎灌丛 <i>Quercus variabilis</i> , <i>Quercus acutissima</i> scrub	HCV	EN	HCV-EN	优先保护 Priority conservation
桃金娘灌丛 <i>Rhodomyrtus tomentosa</i> scrub	MCV	CR	MCV-CR	次优先保护 Secondary conservation
铁仔、金花小檗灌丛 <i>Myrsine africana</i> , <i>Berberis wilsoniae</i> scrub	MCV	VU	MCV-VU	次优先保护 Secondary conservation
杨叶木姜子、盐肤木灌丛 <i>Litsea populifolia</i> , <i>Rhus chinensis</i> var. <i>roxburghii</i> scrub	LCV	EN	LCV-EN	一般保护 General conservation
余甘子、糙叶水锦树灌丛 <i>Phyllanthus emblica</i> , <i>Wendlandia scabra</i> scrub	HCV	NT/LC	HCV-NT/LC	预先保护 Proactive conservation
余甘子、水锦树灌丛 <i>Phyllanthus emblica</i> , <i>Wendlandia uvariifolia</i> scrub	HCV	VU	HCV-VU	优先保护 Priority conservation
余甘子灌丛 <i>Phyllanthus emblica</i> scrub	HCV	NT/LC	HCV-NT/LC	预先保护 Proactive conservation
中平树灌丛 <i>Macaranga denticulata</i> scrub	EHCV	NT/LC	EHCV-NT/LC	预先保护 Proactive conservation
中平树、云南银柴、毛桐灌丛 <i>Macaranga denticulata</i> , <i>Aporosa yunnanensis</i> , <i>Mallotus barbatus</i> scrub	HCV	VU	HCV-EN	优先保护 Priority conservation
竹叶椒、荚蒾灌丛 <i>Zanthoxylum armatum</i> , <i>Viburnum dilatatum</i> scrub	MCV	EN	MCV-EN	次优先保护 Secondary conservation
竹叶椒、球核荚蒾灌丛 <i>Zanthoxylum armatum</i> , <i>Viburnum propinquum</i> scrub	MCV	CR	MCV-CR	次优先保护 Secondary conservation
竹叶椒、樟叶荚蒾灌丛 <i>Zanthoxylum armatum</i> , <i>Viburnum cinnamomifolium</i> scrub	MCV	EN	MCV-EN	次优先保护 Secondary conservation
仙人掌、金合欢灌丛 <i>Opuntia dillenii</i> , <i>Vachellia farnesiana</i> scrub	LCV	CR	LCV-CR	一般保护 General conservation
绢毛蔷薇、匍匐栒子灌丛 <i>Rosa sericea</i> , <i>Cotoneaster adpressus</i> scrub	HCV	CR	HCV-CR	优先保护 Priority conservation
矮高山栎灌丛 <i>Quercus monimotricha</i> scrub	MCV	EN	MCV-EN	次优先保护 Secondary conservation
草原杜鹃灌丛 <i>Rhododendron telmateium</i> scrub	LCV	NT/LC	LCV-NT/LC	一般保护 General conservation
淡黄杜鹃灌丛 <i>Rhododendron flavidum</i> scrub	EHCV	CR	EHCV-CR	优先保护 Priority conservation
黄毛杜鹃、金背杜鹃灌丛 <i>Rhododendron rufum</i> , <i>Rhododendron clementinae</i> subsp. <i>aureodorsale</i> scrub	MCV	CR	MCV-CR	次优先保护 Secondary conservation
马缨花杜鹃灌丛 <i>Rhododendron delavayi</i> scrub	MCV	CR	MCV-CR	次优先保护 Secondary conservation
腺房杜鹃灌丛 <i>Rhododendron adenogynum</i> scrub	MCV	NT/LC	MCV-NT/LC	一般保护 General conservation
雪层杜鹃、髯花杜鹃灌丛 <i>Rhododendron nivale</i> , <i>Rhododendron anthopogon</i> scrub	LCV	EN	LCV-EN	一般保护 General conservation
腋花杜鹃灌丛 <i>Rhododendron racemosum</i> scrub	HCV	NT/LC	HCV-NT/LC	预先保护 Proactive conservation
密枝杜鹃灌丛 <i>Rhododendron fastigiatum</i> scrub	MCV	EN	MCV-EN	次优先保护 Secondary conservation
白茅、密序野古草草从 <i>Imperata cylindrica</i> var. <i>major</i> , <i>Arundinella bengalensis</i> grassland	MCV	NT/LC	MCV-NT/LC	一般保护 General conservation
白茅、扭黄茅、龙须草草从 <i>Imperata cylindrica</i> var. <i>major</i> , <i>Heteropogon contortus</i> , <i>Silene linearifolia</i> grassland	EHCV	VU	EHCV-VU	优先保护 Priority conservation
刺芒野古草、云南裂稃草草从 <i>Arundinella setosa</i> , <i>Schizachyrium delavayi</i> grassland	MCV	NT/LC	MCV-NT/LC	一般保护 General conservation
刺芒野古草草从 <i>Arundinella setosa</i> grassland	MCV	NT/LC	MCV-NT/LC	一般保护 General conservation
金茅、野古草、青香茅草从 <i>Eulalia speciosa</i> , <i>Arundinella hirta</i> , <i>Cymbopogon mekongensis</i> grassland	HCV	CR	HCV-CR	优先保护 Priority conservation
类芦、棕叶芦、斑茅草从 <i>Neyraudia reynaudiana</i> , <i>Thysanolaena latifolia</i> , <i>Saccharum arundinaceum</i> grassland	HCV	NT/LC	HCV-NT/LC	预先保护 Proactive conservation

群系 Formation	保护价值 Conservation Value	最高受威胁等级 highest threatened level	保护价值-受威胁等级组合 Conservation value-threatened level combination	推荐保护类型 recommended conservation type
芒草、野古草、金茅草丛 <i>Miscanthus sinensis</i> , <i>Arundinella hirta</i> , <i>Eulalia speciosa</i> grassland	HCV	EN	HCV-EN	优先保护 Priority conservation
芒草草丛 <i>Miscanthus sinensis</i> grassland	LCV	CR	LCV-CR	一般保护 General conservation
扭黄茅、孔颖草、芸香草草丛 <i>Heteropogon contortus</i> , <i>Bothriochloa pertusa</i> , <i>Cymbopogon distans</i> grassland	LCV	NT/LC	LCV-NT/LC	一般保护 General conservation
扭黄茅、龙须草、白茅草丛 <i>Heteropogon contortus</i> , <i>Eulaliopsis binata</i> , <i>Imperata cylindrica</i> var. <i>major</i> grassland	LCV	NT/LC	LCV-NT/LC	一般保护 General conservation
扭黄茅草丛 <i>Heteropogon contortus</i> grassland	EHCV	CR	EHCV-CR	优先保护 Priority conservation
穗序野古草草丛 <i>Arundinella hookeri</i> grassland	MCV	NT/LC	MCV-NT/LC	一般保护 General conservation
羊茅、野青茅、杂类草草甸 <i>Festuca ovina</i> , <i>Deyeuxia pyramidalis</i> , forb meadow	MCV	NT/LC	MCV-NT/LC	一般保护 General conservation
小蒿草高寒草甸 <i>Kobresia pygmaea</i> meadow	MCV	NT/LC	MCV-NT/LC	一般保护 General conservation
囊状蒿草、杂类草高寒草甸 <i>Kobresia fragilis</i> , forb alpine meadow	MCV	NT/LC	MCV-NT/LC	一般保护 General conservation
鳞叶点地梅垫状植被 <i>Androsace squarrosula</i> cushion vegetation	MCV	NT/LC	MCV-NT/LC	一般保护 General conservation
风毛菊、红景天、垂头菊稀疏植被 <i>Saussurea japonica</i> , <i>Rhodiola rosea</i> , <i>Cremanthodium reniforme</i> sparse vegetation	LCV	VU	LCV-VU	一般保护 General conservation
水母雪莲、凤毛菊稀疏植被 <i>Saussurea medusa</i> , <i>Saussurea glomerata</i> sparse vegetation	LCV	NT/LC	LCV-NT/LC	一般保护 General conservation



附录7 保护植被与保护优先区的空间分布。(a)保护植被分布: V1, 优先保护植被; V2, 次优先保护植被; V3, 预先性保护植被。(b)保护优先区分布: PCA1, 云南南部边缘热带雨林区; PCA2, 滇东南喀斯特东南季风阔叶林区; PCA3, 澜沧江中游-哀牢山中山湿性常绿阔叶林区; PCA4, 滇东北乌蒙山湿润常绿阔叶林区; PCA5, 滇西北高山峡谷针叶林区。

Appendix 7 Distribution of conservation vegetation and priority conservation areas. (a) Distribution of conservation vegetation: V1, Priority conservation vegetation; V2, Secondary conservation; V3, Proactive conservation. (b) Distribution of priority conservation areas: PCA1, Tropical rainforest area on the southern edge of Yunnan; PCA2, Southeast monsoon broad-leaved forest area on the karst, southeast Yunnan; PCA3, Mid-mountain humid evergreen broad-leaved forest area on the middle reaches of Lancang River-Ailao Mountains; PCA4, Moist evergreen broad-leaved forest area on the Wumeng Mountains, northeast Yunnan; PCA5, Coniferous forest area on the high mountain canyon, northwest Yunnan.