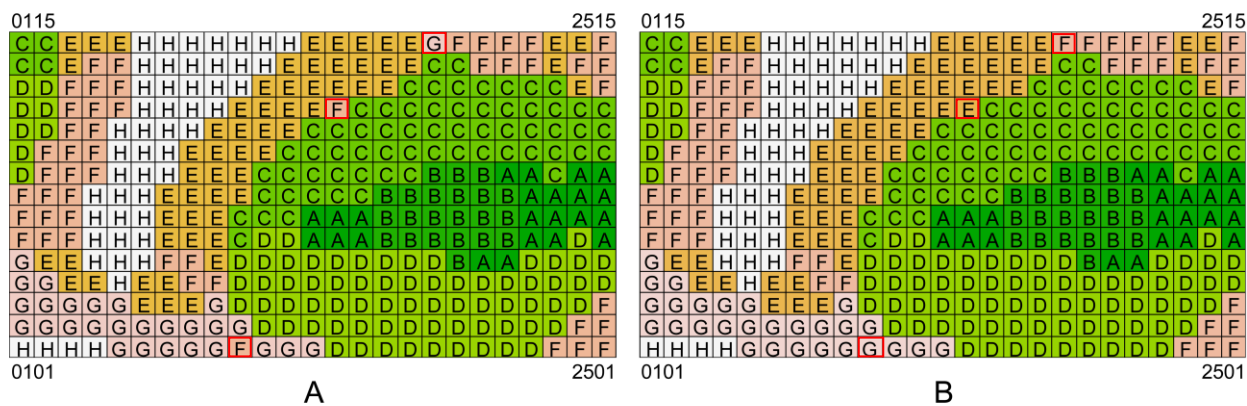


附图I 弄岗北热带喀斯特季节性雨林15 ha样地的三维地形图  
Appendix I Topography of the 15-ha Nonggang plot



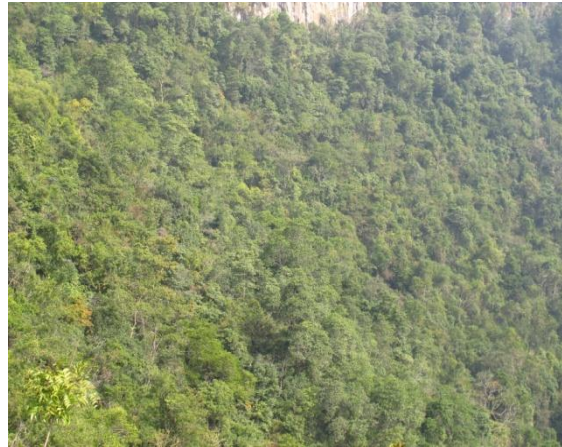
A, B, C, D, E, F, G, H 表示 8 个群丛类型, A: 修正前, B: 修正后。  
A to H representing eight types of association, A, Original. B, Revised.

附图II 弄岗北热带喀斯特季节性雨林15 ha样地8类群丛的20 m × 20 m的样方分布图  
Appendix II Map of the eight associations at the scale of 20 m × 20 m in the Nonggang plot



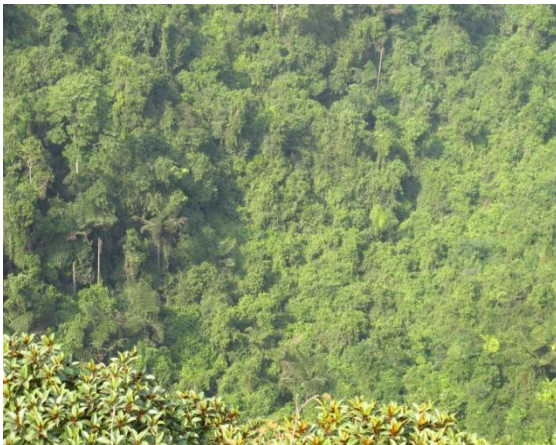
**样地上部。**该区域位于样地山脊, 主要物种有黄梨木、鱼骨木、细叶谷木、毛叶铁榄、山榄叶柿等。

**The top of the plot.** The principal plant species are *Boniodendron minius*, *Canthium dicocum*, *Memecylon scutellatum*, *Sinosideroxylon pedunculatum*, *Diospyros siderophylla* and so on.



**样地中部。**该区域位于样地山腰, 主要物种有蚬木、闭花木、广西牡荊、海南椴、网脉核果木、金丝李等。

**The mountainside of the plot.** The principal plant species are *Excentrodendron tonkinense*, *Cleistanthus sumatranus*, *Vitex kwangsiensis*, *Diplodiscus trichosperma*, *Drypetes perreticulata*, *Garcinia paucinervis* and so on.



**样地下部。**该区域位于样地谷底边缘地带, 主要物种有广西棋子豆、中国无忧花、苹婆、广西牡荊、肥牛树、劲直刺桐、对叶榕等。

**The foot of the plot.** The principal plant species are *Cychidendron guangxiensis*, *Saraca dives*, *Sterculia monosperma*, *Vitex kwangsiensis*, *Cephalomappa sinensis*, *Erythrina stricta*, *Ficus hispida* and so on.



**样地谷底。**该区域位于样地最低处, 主要植物有对叶榕、苹婆、劲直刺桐、董棕、广西牡荊、广西棋子豆等。

**The valley bottom of the plot.** The principal plant species are *Ficus hispida*, *Sterculia monosperma*, *Erythrina stricta*, *Caryota obtusa*, *Vitex kwangsiensis*, *Cychidendron guangxiensis* and so on.

附图III 弄岗北热带喀斯特季节性雨林部分群落照片(丁涛摄)

Appendix III A sequence of photos showing physiognomy of a northern tropical karst seasonal rain forest plot (photographed by Tao Ding)