

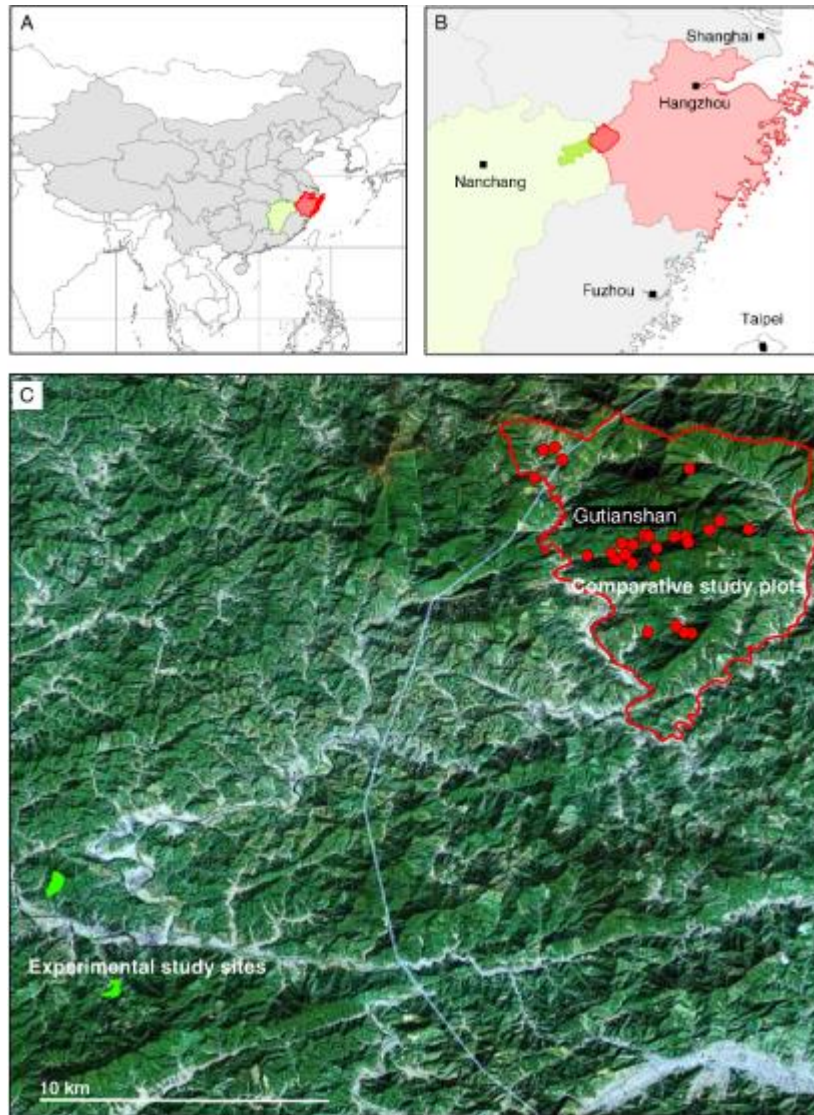
附录I BEF-China项目发表论文目录(截至2013年5月30日)

- Bachmann D, Both S, Bruelheide H, Ding BY, Gao M, Härdtle W, Scherer-Lorenzen M, Erfmeier A (2012) Functional trait similarity of native and invasive herb species in subtropical China—Environment-specific differences are the key. *Environmental and Experimental Botany*, **83**, 82–92.
- Bohnke M, Bruelheide H (2013) How do evergreen and deciduous species respond to shade? Tolerance and plasticity of subtropical tree and shrub species of South-East China. *Environmental and Experimental Botany*, **87**, 179–190.
- Bohnke M, Kreißig N, Krober W, Fang T, Bruelheide H (2012) Wood trait–environment relationships in a secondary forest succession in South-East China. *Trees*, **26**, 641–651.
- Both S, Fang T, Baruffol M, Schmid B, Bruelheide H, Erfmeier A (2012) Effects of tree sapling diversity and nutrient addition on herb-layer invasibility in communities of subtropical species. *Open Journal of Ecology*, **2**, 1–11.
- Both S, Fang T, Bohnke M, Bruelheide H, Geissler C, Kuhn P, Scholten T, Trogisch S, Erfmeier A (2011) Lack of tree layer control on herb layer characteristics in a subtropical forest. China. *Journal of Vegetation Science*, **22**, 1120–1131.
- Bruelheide H, Bohnke M, Both S, Fang T, Assmann T, Baruffol M, Bauhus J, Buscot F, Chen XY, Ding BY, Durka W, Erfmeier A, Fischer M, Geissler C, Guo DL, Guo LD, Härdtle W, He JS, Hector A, Krober W, Kuhn P, Lang AC, Nadrowski K, Pei KQ, Scherer-Lorenzen M, Shi XZ, Scholten T, Schuldt A, Trogisch S, von Oheimb G, Welk E, Wirth C, Wu YT, Yang XF, Zeng XQ, Zhang S, Zhou HZ, Ma KP, Schmid B (2011) Community assembly during secondary forest succession in a Chinese subtropical forest. *Ecological Monographs*, **81**, 25–41.
- Geißler C, Kühn P, Böhnke M, Bruelheide H, Shi XZ, Scholten T (2012) Splash erosion potential under tree canopies in subtropical SE China. *Catena*, **91**, 85–93.
- Geißler C, Kühn P, Shi XZ, Scholten T (2010) Estimation of throughfall erosivity in a highly diverse forest ecosystem using sand-filled splash cups. *Journal of Earth Science*, **21**, 897–900.
- Geißler C, Lang AC, von Oheimb G, Härdtle W, Baruffol M, Scholten T (2012) Impact of tree saplings on the kinetic energy of rainfall—the importance of stand density, species identity and tree architecture in subtropical forests in China. *Agricultural and Forest Meteorology*, **156**, 31–40.
- Geissler C, Nadrowski K, Kühn P, Baruffol M (2013) Kinetic energy of throughfall in subtropical forests of SE China—effects of tree canopy structure, functional traits, and biodiversity. *PLoS ONE*, **8**, e49618. doi:10.1371/journal.pone.0049618.
- Kröber W, Böhnke M, Welk E, Wirth C, Bruelheide H (2012) Leaf trait–environment relationships in a subtropical broadleaved forest in South-East China. *PLoS ONE*, **7**, e35742. doi:10.1371/journal.pone.0035742.
- Lang AC, Härdtle W, Baruffol M, Bohnke M, Bruelheide H, Schmid B, von Wehrden H, von Oheimb G (2012) Mechanisms promoting tree species co-existence: experimental evidence with saplings of subtropical forest ecosystems of China. *Journal of Vegetation Science*, **23**, 837–846.
- Lang AC, Härdtle W, Bruelheide H, Geißler C, Nadrowski K, Schuldt A, Yu MJ, von Oheimb G (2010) Tree morphology responds to neighbourhood competition and slope in species-rich forests of subtropical China. *Forest Ecology and Management*, **260**, 1708–1715.
- Lang AC, Härdtle W, Krober W, Schroter M, von Wehrden H, von Oheimb G (2012) Horizontal, but not vertical canopy structure is related to stand functional diversity in a subtropical slope forest. *Ecological Research*, **27**, 181–189.
- Li N, Xu WB, Lai JS, Yang B, Lin DM, Ma KP (2013) The coarse root biomass of eight common tree species in subtropical evergreen forest. *Chinese Science Bulletin*, **58**, 329–335.
- Nadrowski K, Ratcliffe S, Bönisch G, Bruelheide H, Kattge J, Liu XJ, Maicher L, Mi XC, Prilop M, Seifarth D, Welter K, Windisch S, Wirth C (2013) Harmonizing, annotating and sharing data in biodiversity–ecosystem functioning research. *Methods in Ecology and Evolution*, **4**, 201–205.
- Scholten T, Geißler C, Goc J, Kühn P, Wiegand C (2011) A new splash cup to measure the kinetic energy of rainfall. *Journal of Plant Nutrition and Soil Science*, **174**, 596–601.
- Schuldt A, Assmann T, Schaefer M (2013) Scale-dependent diversity patterns affect spider assemblages of two contrasting forest ecosystems. *Acta Oecologica*, **49**, 17–22.
- Schuldt A, Baruffol M, Bohnke M, Bruelheide H, Härdtle W, Lang AC, Nadrowski K, von Oheimb G, Voigt W, Zhou HZ, Assmann T (2010) Tree diversity promotes insect herbivory in subtropical forests of South-East China. *Journal of Ecology*, **98**, 917–926.
- Schuldt A, Both S, Bruelheide H, Härdtle W, Schmid B, Zhou HZ, Assmann T (2011) Predator diversity and abundance provide little support for the enemies hypothesis in forests of high tree diversity. *PLoS ONE*, **6**, e22905. doi:10.1371/journal.pone.0022905.
- Schuldt A, Bruelheide H, Durka W, Eichenberg D, Fischer M, Kröber W, Härdtle W, Ma KP, Michalski SG, Palm W-U, Schmid B, Welk E, Zhou HZ, Assmann T (2012) Plant traits affecting herbivory on tree recruits in highly diverse subtropical forests. *Ecology Letters*, **15**, 732–739.
- Schuldt A, Bruelheide H, Härdtle W, Assmann T (2012) Predator assemblage structure and temporal variability of species richness and abundance in forests of high tree diversity. *Biotropica*, **44**, 793–800.
- Schuldt A, Wang ZH, Zhou HZ, Assmann T (2009) Integrating highly diverse invertebrates into broad-scale analyses of

- cross-taxon congruence across the Palaearctic. *Ecography*, **32**, 1019–1030.
- Shi MM, Michalski SG, Chen XY, Durka W (2011) Isolation by elevation: genetic structure at neutral and putatively non-neutral loci in a dominant tree of subtropical forests, *Castanopsis eyrei*. *PLoS ONE*, **6**, e21302. doi:10.1371/journal.pone.0021302.
- von Oheimb G, Lang AC, Bruelheide H, Forrester DI, Wäsche I, Yu MJ, Härdtle W (2011) Individual-tree radial growth in a subtropical broad-leaved forest: the role of local neighbourhood competition. *Forest Ecology and Management*, **261**, 499–507.
- Wu YT, Gutknecht J, Nadrowski K, Geißler C, Kühn P, Scholten T, Both S, Erfmeier A, Böhnke M, Bruelheide H, Wubet T, Buscot F (2012) Relationships between soil microorganisms, plant communities, and soil characteristics in Chinese subtropical forests. *Ecosystems*, **15**, 624–636.
- Yang XF, Bauhus J, Both S, Fang T, Härdtle W, Kröber W, Ma KP, Nadrowski K, Pei KQ, Scherer-Lorenzen M, Scholten T, Seidler G, Schmid B, Oheimb G, Bruelheide H (2013) Establishment success in a forest biodiversity and ecosystem functioning experiment in subtropical China (BEF-China). *European Journal of Forest Research*. doi: 10.1007/s10342-013-0696-z.
- Zeng XQ, Michalski SG, Fischer M, Durka W (2012) Species diversity and population density affect genetic structure and gene dispersal in a subtropical understory shrub. *Journal of Plant Ecology*, **5**, 270–278.
- 童跃伟, 项文化, 王正文, Durka W, Fischer M (2013) 地形、邻株植物及自身大小对红楠幼树生长与存活的影响. *生物多样性*, **21**, 269–277.

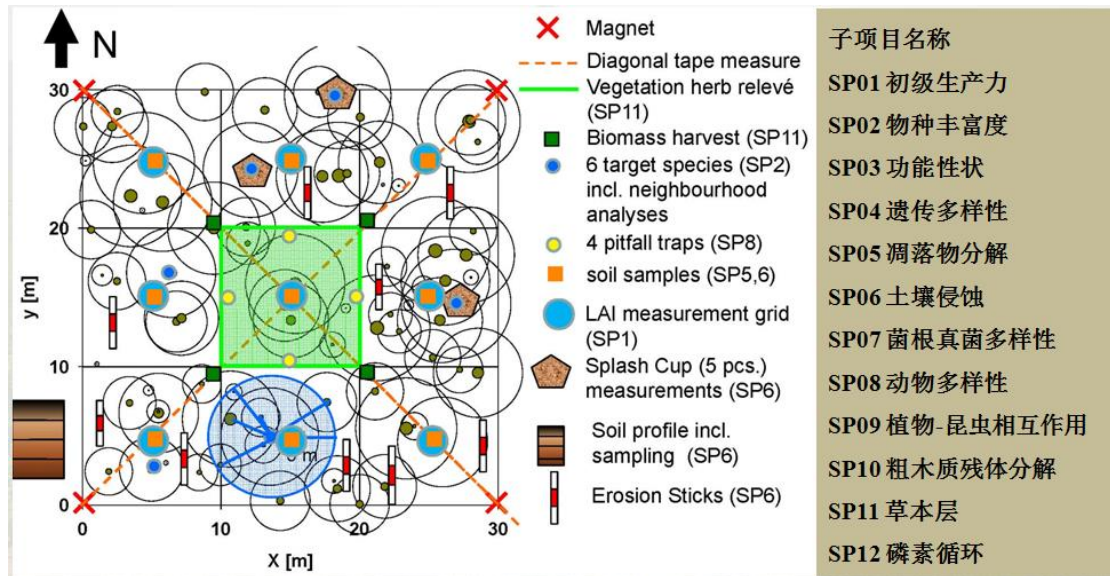
附录II 参考文献

- Bruelheide H, Böhnke M, Both S, Fang T, Assmann T, Baruffol M, Bauhus J, Buscot F, Chen XY, Ding BY, Durka W, Erfmeier A, Fischer M, Geißler C, Guo D, Guo LD, Härdtle W, He JS, Hector A, Kröber W, Kühn P, Lang AC, Nadrowski K, Pei KQ, Scherer-Lorenzen M, Shi XZ, Scholten T, Schuldt A, Trogisch S, von Oheimb G, Welk E, Wirth C, Wu YT, Yang XF, Zeng XQ, Zhang SR, Zhou HZ, Ma KP, Schmid B (2011) Community assembly during secondary forest succession in a Chinese subtropical forest. *Ecological Monographs*, **81**, 25–41.
- Cameron (2002) The year of the ‘diversity–ecosystem function’ debate. *Trends in Ecology and Evolution*, **17**, 495–496.
- Cardinale BJ, Duffy JE, Gonzalez A, Hooper DU, Perrings C, Venail P, Narwani A, Mace GM, Tilman D, Wardle DA, Kinzig AP, Daily GC, Loreau M, Grace JB, Larigauderie A, Srivastava DS, Naeem S (2012) Corrigendum: biodiversity loss and its impact on humanity. *Nature*, **486**, 59–67.
- Cardinale BJ, Matulich KL, Hooper DU, Byrnes JE, Duffy E, Gamfeldt L, Balvanera P, O’onnor MI, Gonzalez A (2011) The functional role of producer diversity in ecosystems. *American Journal of Botany*, **98**, 572–592.
- Grime JP (2002) Declining plant diversity: empty niches or functional shifts? *Journal of Vegetation Science*, **13**, 457–460.
- Heywood VH (1995) *Global Biodiversity Assessment*. Cambridge University Press, Cambridge.
- Huston MA (1997) Hidden treatments in ecological experiments: re-evaluating the ecosystem function of biodiversity. *Oecologia*, **110**, 449–460.
- Jones CG, Lawton JH, Shachak M (1994) Organisms as ecosystem engineers. *Oikos*, **69**, 373–386.
- Leadley PW, Körner C (1996) Effects of elevated CO₂ on plant species dominance in a highly diverse calcareous grassland. In: *Carbon Dioxide, Populations, and Communities* (eds Körner C, Bazzaz FA), pp. 159–175. Academic Press, San Diego, California, USA.
- Loreau M, Naeem S, Inchausti P (2002) *Biodiversity and Ecosystem Functioning*. Oxford University Press, New York.
- Naeem S, Thompson LJ, Lawler SP, Lawton JH, Woodfin RM (1994) Declining biodiversity can alter the performance of ecosystems. *Nature*, **368**, 734–737.
- Power ME, Tilman D, Estes JA, Menge BA, Bond WJ, Mills LS, Daily G, Castilla JC, Lubchenco J, Paine RT (1996) Challenges in the quest for keystones. *BioScience*, **46**, 609–620.
- Schmid B, Hector A, Huston MA, Inchausti P, Nijs I, Leadley PW, Tilman D (2002) The design and analysis of biodiversity experiments. In: *Biodiversity and Ecosystem Functioning: Synthesis and Perspectives* (eds Loreau M, Naeem S, Inchausti P), pp. 61–75. Oxford University Press, Oxford.
- Schulze ED, Mooney HA (1993) *Biodiversity and Ecosystem Function*. Springer, New York.
- Sterner RW, Elser JJ (2002) *Ecological Stoichiometry: The Biology of Elements from Molecules to the Biosphere*. Princeton University Press, New Jersey.
- Tilman D, Wedin D, Knops J (1996) Productivity and sustainability influenced by biodiversity in grassland ecosystems. *Nature*, **379**, 718–720.
- Yang XF, Bauhus J, Both S, Fang T, Härdtle W, Kröber W, Ma KP, Nadrowski K, Pei KQ, Scherer-Lorenzen M, Scholten T, Seidler G, Schmid B, Oheimb G, Bruelheide H (2013) Establishment success in a forest biodiversity and ecosystem functioning experiment in subtropical China (BEF-China). *European Journal of Forest Research*, **132**(on line). doi: 10.1007/s10342-013-0696-z.
- 黄建辉, 白永飞, 韩兴国 (2001) 物种多样性与生态系统功能: 影响机制及有关假说. *生物多样性*, **9**, 1–7.
- 张全国, 张大勇 (2002) 生物多样性与生态系统功能: 进展与争论. *生物多样性*, **10**, 49–60.
- 张全国, 张大勇 (2003) 生物多样性与生态系统功能: 最新的进展与动向. *生物多样性*, **11**, 351–363.



附图1 浙江古田山天然林比较样地分布图

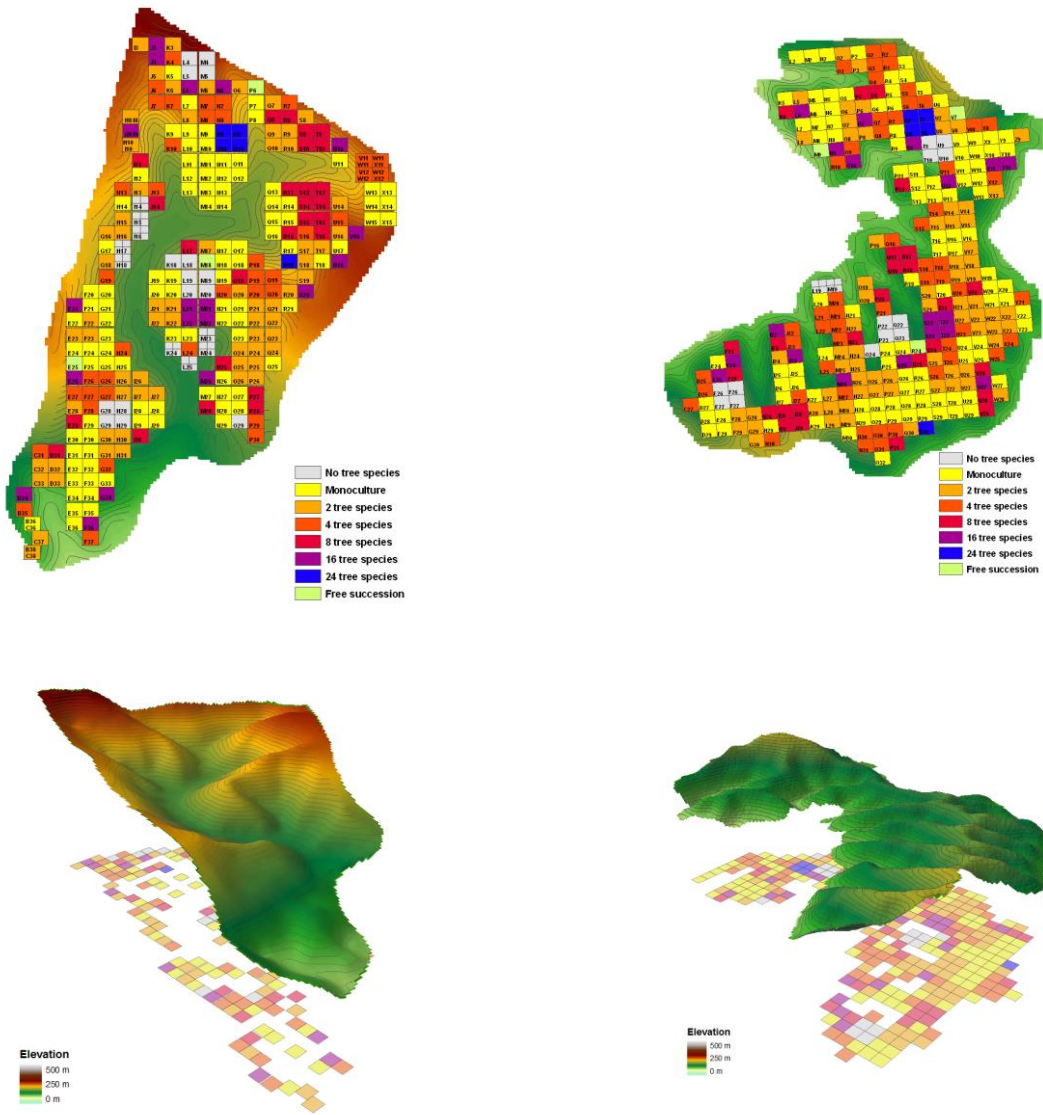
(A) 浙江省(红色)和江西省(绿色)位置; (B) 古田山国家级自然保护区(深红色)和德兴市(深绿色)位置; (C) 古田山天然林比较样地27个小样地分布图(红色圆点)(引自项目申请报告Proposal for the 2nd of the DFG Research Unit 891 phase (2011–2014)第13页)。



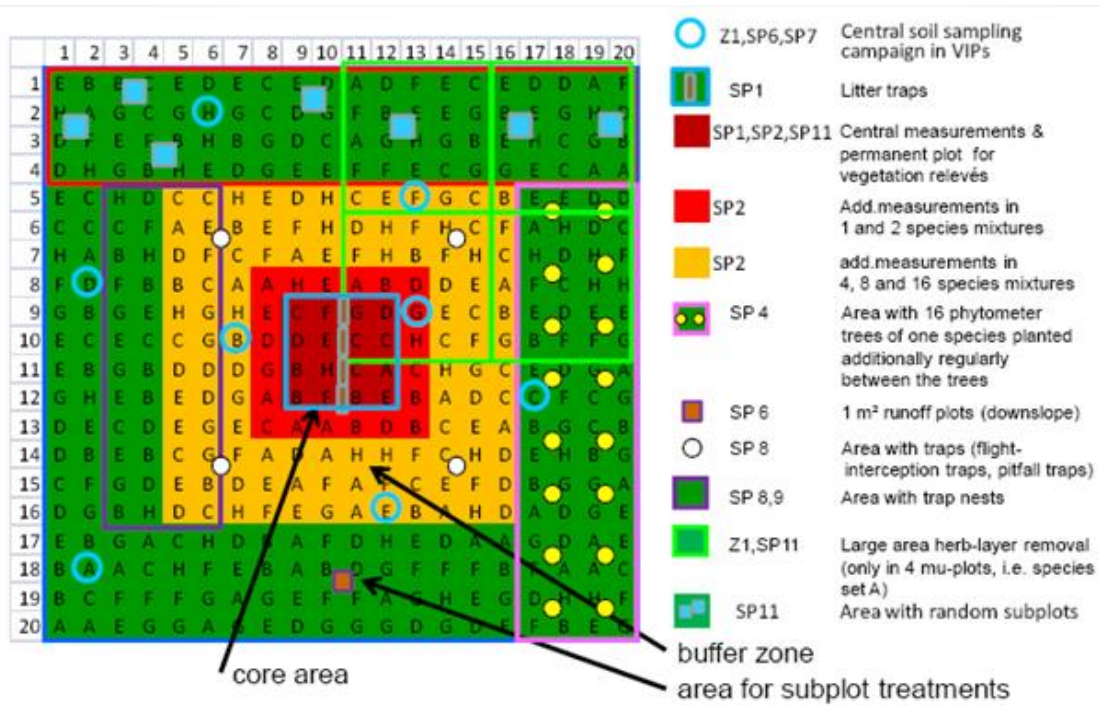
附图2 比较样地每个小样地中的实验设计和与此相关的子项目示意图(引自项目申请报告Proposal for the 2nd of the DFG Research Unit 891 phase (2011–2014)第23页)



附图3 新岗山预实验样地一角(马克平摄)



附图4 新岗山主样地样方空间分布以及物种多样性水平示意(引自项目申请报告Proposal for the 2nd of the DFG Research Unit 891 phase (2011–2014)第50–51页)



附图5 新岗山主样地1亩基本样方中植物配置与功能分区示意图(子项目代号的意义同图2, 引自项目申请报告Proposal for the 2nd of the DFG Research Unit 891 phase (2011–2014))第57页)