

附录 2 海南东寨港国家级自然保护区部分潮间带蟹类标本照片

Appendix 2 Specimen photos for some of intertidal crabs from Dongzhaigang National Nature Reserve, Hainan Province, China

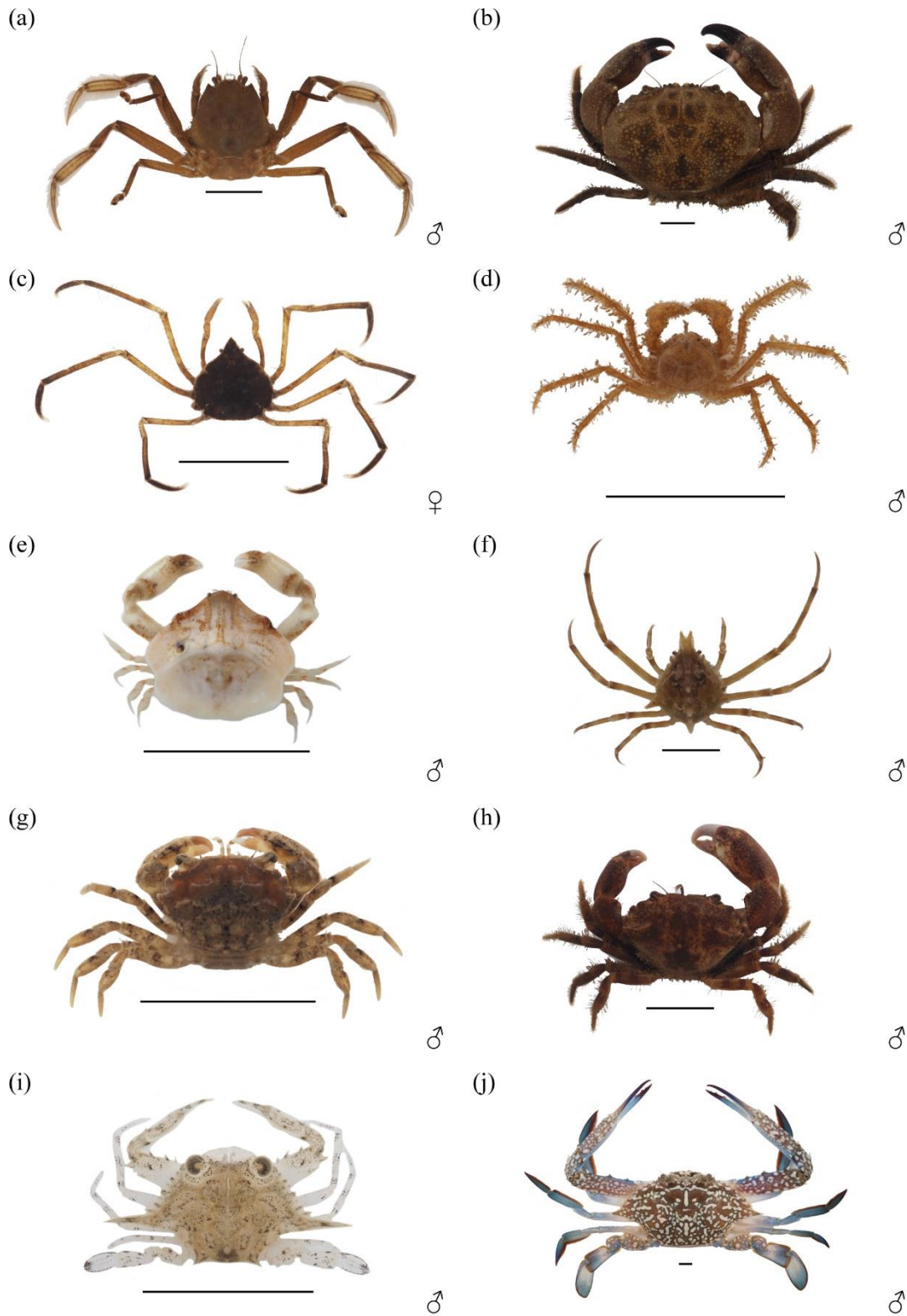


图 1 (a), 熟练新关公蟹 *Neodorippe callida*; (b), 蝇哲蟹 *Myomenippe hardwickii*; (c), 突额薄板蟹 *Elamena rostrata*; (d), 中华新尖额蟹 *Neorhynchoplax sinensis*; (e), 短小拟五角蟹 *Paranursia abbreviata*; (f), 里氏绒球蟹 *Doclea rissoni*; (g), 真壮海神蟹 *Benthopanope eucratoides*; (h), 光滑异装蟹 *Heteropanope glabra*; (i), 假矛形类梭蟹 *Eodemus pseudohastatoides*; (j), 远海梭子蟹 *Portunus pelagicus*. 参照线均为 1 cm.

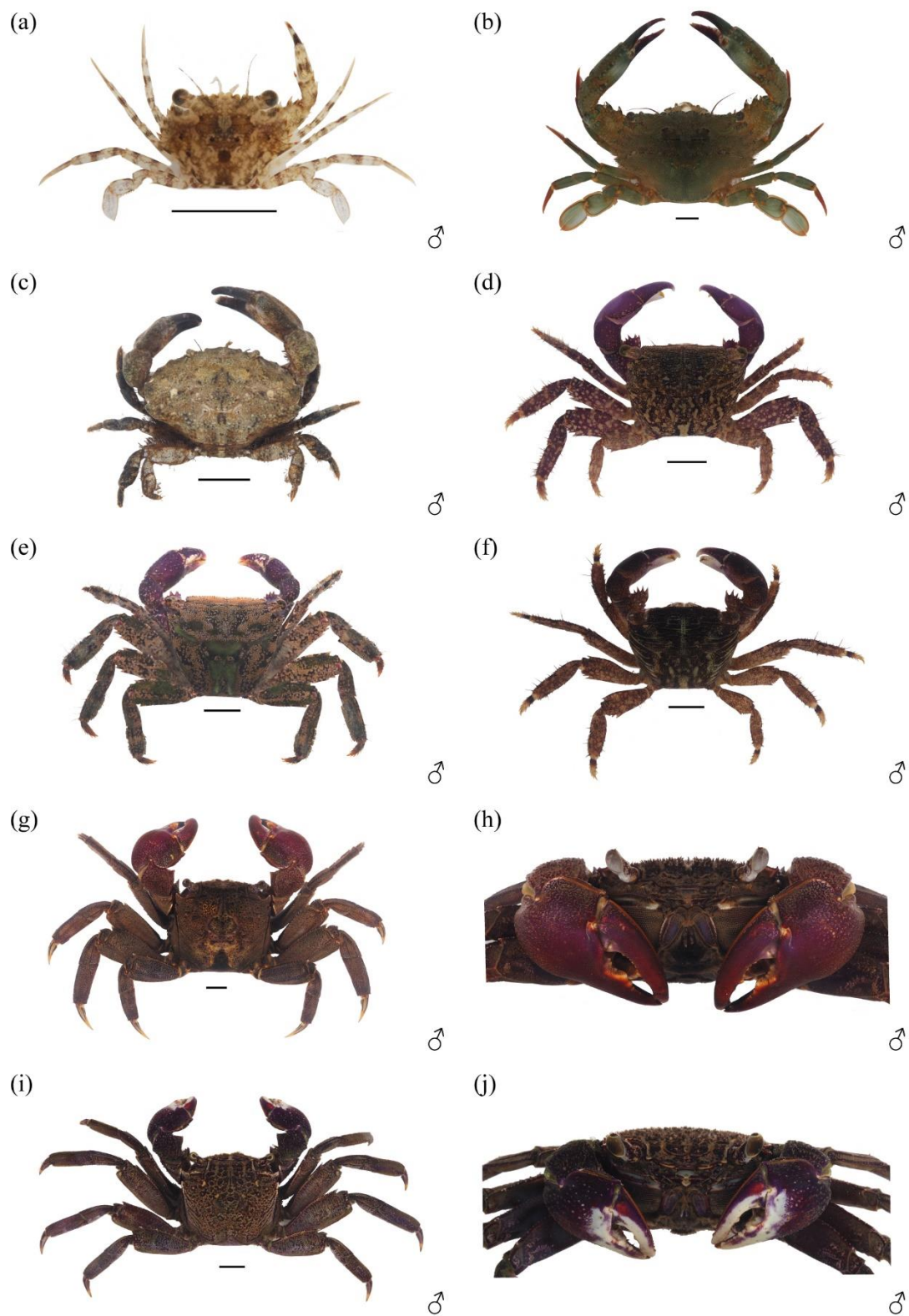


图2 (a), 钝齿蜆 *Charybdis (Charybdis) hellerii*; (b), 钝齿长桨蟹 *Thranita crenata*; (c), 近缘皱蟹 *Leptodius affinis*; (d), 宽额大额蟹 *Metopograpsus frontalis*; (e), 大额蟹 *Metopograpsus latifrons*; (f), 四齿大额蟹 *Metopograpsus quadridentatus*; (g)、(h), 密栉上相手蟹 *Episesarma mederi*; (i)、(j), 泡粒上相手蟹 *Episesarma versicolor*. 参照线均为 1 cm.



图 3 (a)、(b), 印尼小相手蟹 *Nanosesarma batavicum*; (c), 小相手蟹 *Nanosesarma minutum*; (d), 刺指小相手蟹 *Nanosesarma pontianacense*; (e), 粗壮新胀蟹 *Neosarmatium smithi*; (f), 近亲拟相手蟹 *Parasesarma affine*; (g), 双齿拟相手蟹 *Parasesarma bidens*; (h), 蓝额拟相手蟹 *Parasesarma eumolpe*; (i), 精巧拟相手蟹 *Parasesarma exquisitum*; (j), 米埔拟相手蟹 *Parasesarma maipoense*. 参照线均为 1 cm.

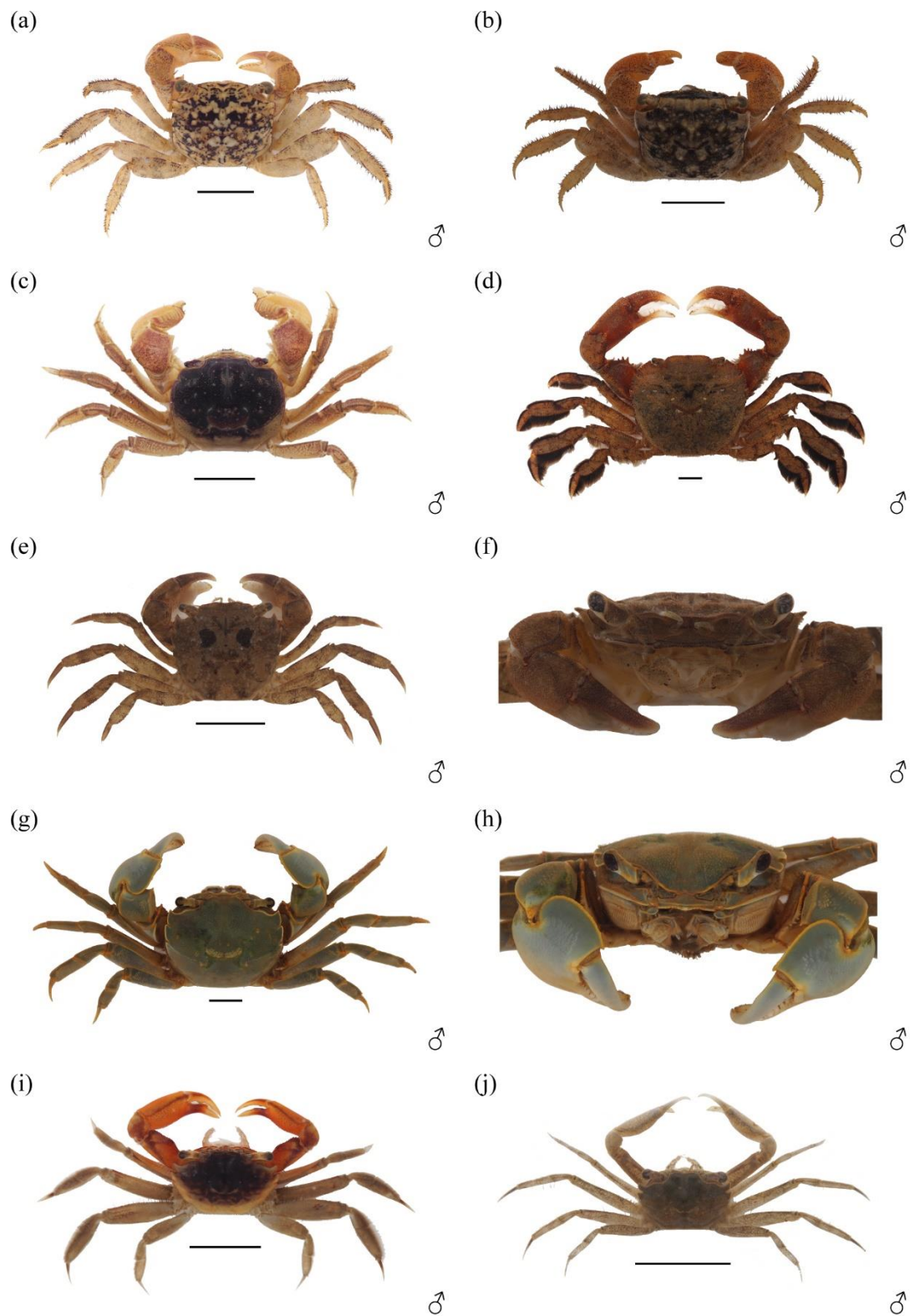


图 4 (a), 斑点拟相手蟹 *Parasesarma pictum*; (b), 细爪拟相手蟹 *Parasesarma unguatum*; (c), 吉氏胀蟹 *Sarmatium germaini*; (d), 字纹弓蟹 *Varuna litterata*; (e)、(f), 高野近方蟹 *Hemigrapsus takanoi*; (g)、(h), 侧足厚蟹 *Helice latimera*; (i), 秀丽长方蟹 *Metaplax elegans*; (j), 沈氏长方蟹 *Metaplax sheni*. 参照线均为 1 cm.



图 5 (a)、(b), 十三疣长方蟹 *Metaplex tredecim*; (c), 角眼沙蟹 *Ocypode ceratophthalmus*; (d), 环纹南方招潮 *Austruca annulipes*; (e), 清白南方招潮 *Austruca lactea*; (f), 丽彩拟瘦招潮 *Paraleptuca splendida*; (g)、(h), 北方丑招潮 *Gelasimus borealis*; (i), 锐刺管招潮 *Tubuca acuta*; (j), 弧边管招潮 *Tubuca arcuata*. 参照线均为 1 cm.

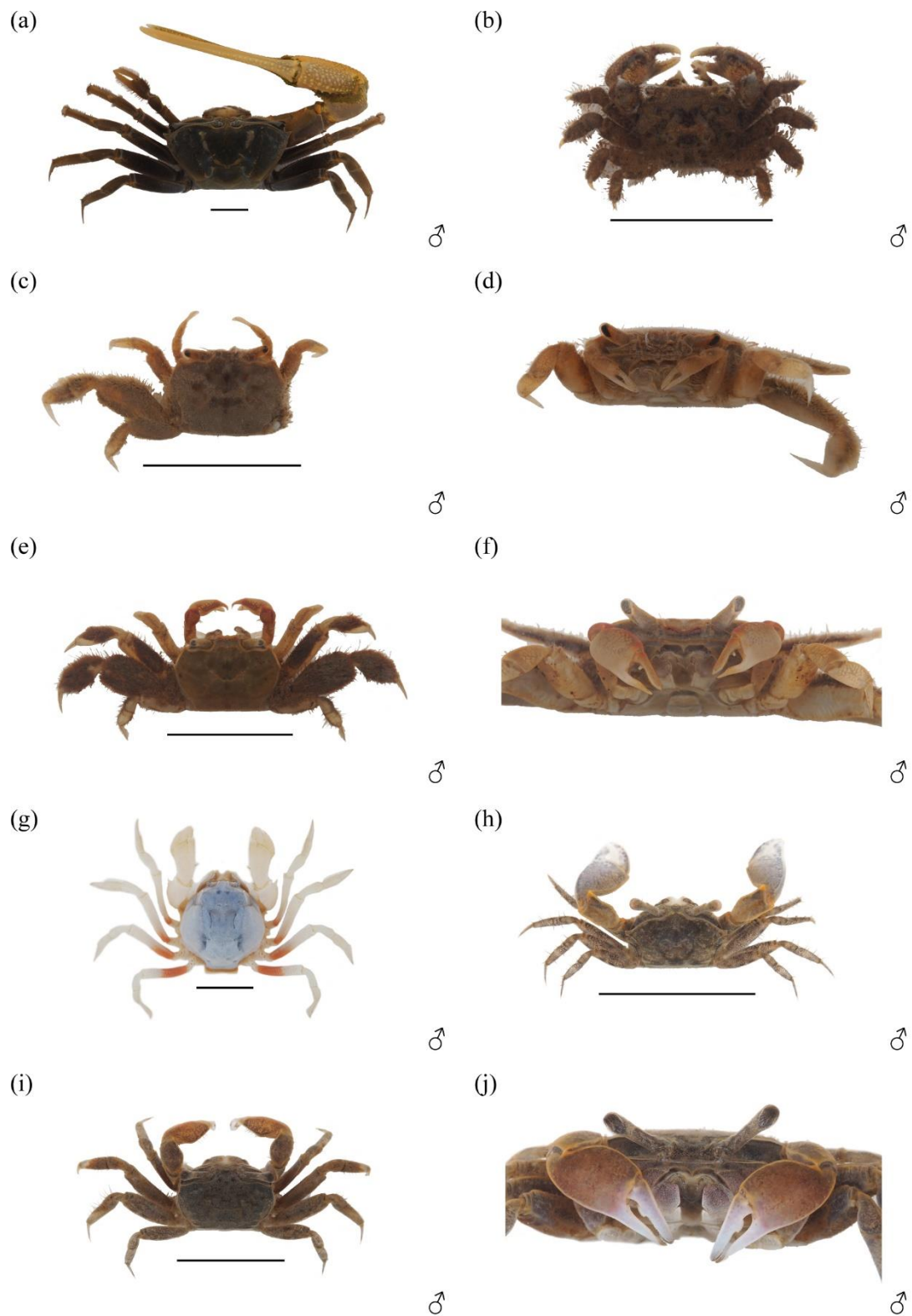


图 6 (a), 拟屠氏管招潮 *Tubuca paradussumieri*; (b), 三突巴隆蟹 *Baruna trigranulum*; (c)、(d), 浓毛拟闭口蟹 *Paracleistostoma crassipilum*; (e)、(f), 扁平拟闭口蟹 *Paracleistostoma depressum*; (g), 短指和尚蟹 *Mictyris brevidactylus*; (h), 角眼切腹蟹 *Tmethypocoelis ceratophora*; (i)、(j), 台湾泥蟹 *Ilyoplax formosensis*. 参照线均为 1 cm.

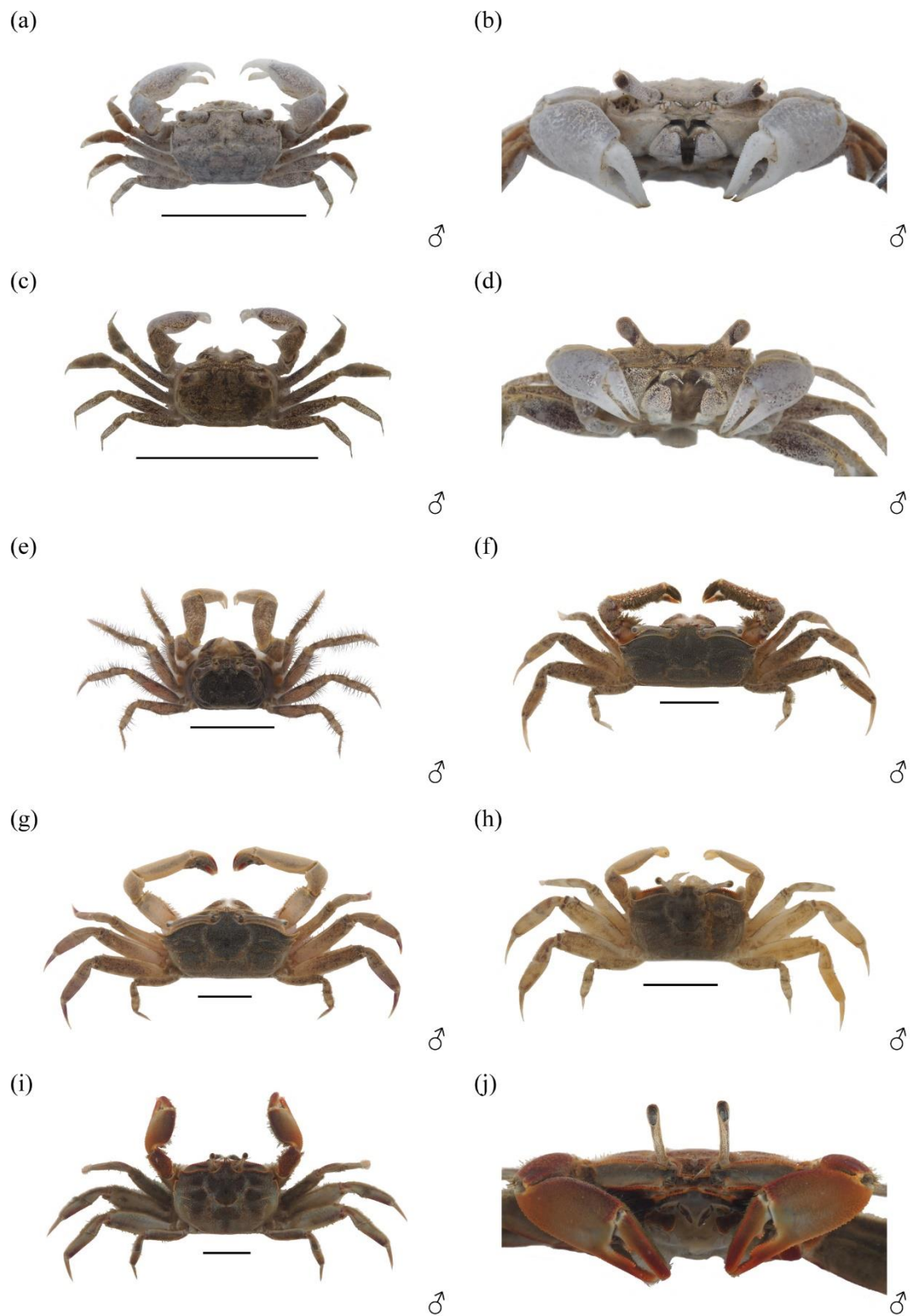


图7 (a)、(b), 锯眼泥蟹 *Ilyoplax serrata*; (c)、(d), 淡水泥蟹 *Ilyoplax tansuiensis*; (e), 中型股窗蟹 *Scopimera intermedia*; (f), 短身大眼蟹 *Macrophthalmus (Macrophthalmus) abbreviatus*; (g), 隆背大眼蟹 *Macrophthalmus (Macrophthalmus) convexus*; (h), 万岁大眼蟹 *Macrophthalmus (Mareotis) banzai*; (i)、(j), 明秀大眼蟹 *Macrophthalmus (Mareotis) definitus*. 参照线均为 1 cm.

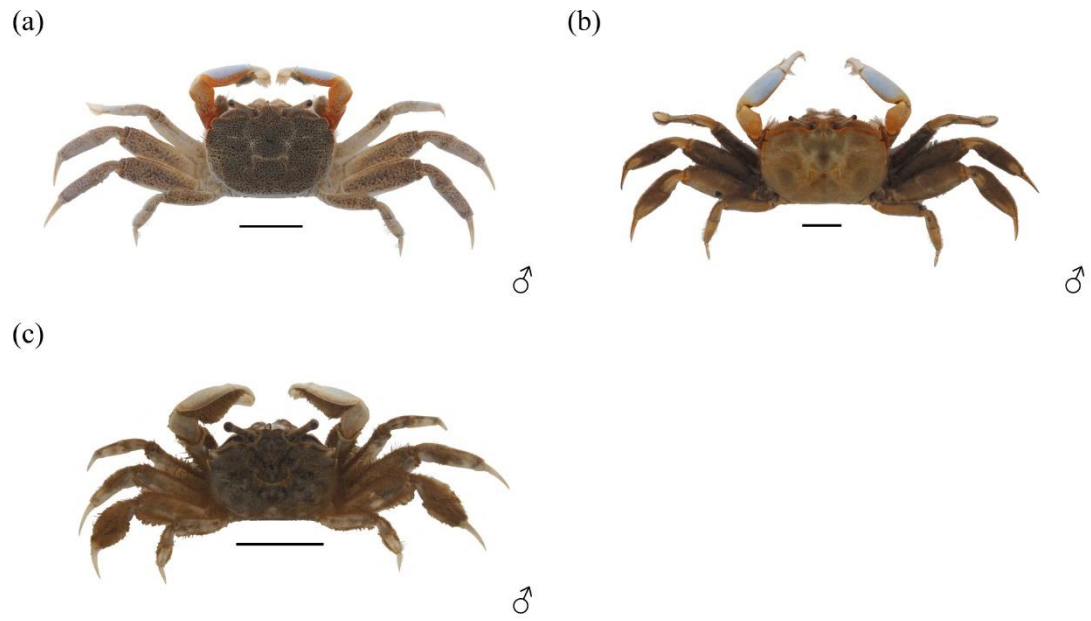


图 8 (a), 太平大眼蟹 *Macrophthalmus (Mareotis) pacificus*; (b), 绒毛大眼蟹 *Macrophthalmus (Mareotis) tomentosus*; (c), 悦目大眼蟹 *Macrophthalmus (Paramareotis) erato*. 参照线均为 1 cm.