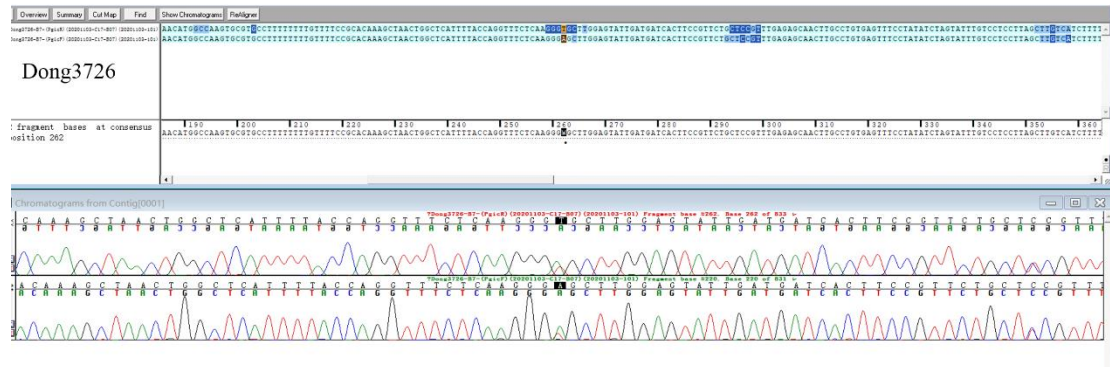


张梦华, 张宪春 (2021) 中国薄叶卷柏复合群的物种划分. 生物多样性, 29, 1607–1619.
<http://www.biodiversity-science.net/CN/10.17520/biods.2021273>

#	Name	& Access N	75	81	135	165	385	543																						
1	Selaginella_picta_19327_Xizang		A	C	A	T	A	G	C	C	A	A	G	G	G	T	G	C	T	C	T	G	A	G	A	A	G	T	T	T
2	Selaginella_delicatula_7786_Yunnan		A	C	A	T	G	G	C	C	A	A	G	G	G	T	G	C	T	C	T	G	A	G	A	A	G	T	T	T
3	Selaginella_delicatula_2867_Hainan		A	C	A	T	G	G	C	C	A	A	G	G	G	T	G	C	T	C	T	G	A	G	A	A	G	T	T	T
4	Selaginella_delicatula_13573_Guangxi		A	C	A	T	G	G	C	C	A	A	G	G	G	T	G	C	T	C	T	G	A	G	A	A	G	T	T	T
5	Selaginella_delicatula_Dong3726_Guangdong		A	C	A	T	G	G	C	C	A	A	G	G	G	W	G	C	T	C	T	G	A	A	A	A	S	T	T	T
6	Selaginella_delicatula_KY022867_Taiwan		A	C	A	T	G	G	C	C	A	A	G	G	G	A	G	C	T	C	T	G	A	A	A	A	C	T	T	T
7	Selaginella_delicatula_SG142_Fujian		A	C	A	T	G	G	C	C	A	A	G	G	G	W	G	C	T	C	T	G	A	R	A	A	S	T	T	T
8	Selaginella_delicatula_GX61_Guangxi		A	C	A	T	G	G	C	C	A	A	G	G	G	T	G	C	T	C	T	G	A	G	A	A	G	T	T	T
9	Selaginella_delicatula_ZXL9687_Hunan		A	C	A	T	G	G	R	C	A	A	G	G	G	T	G	C	T	C	Y	G	A	G	A	A	G	T	T	T
10	Selaginella_delicatula_RS68_Guangxi		A	C	A	T	G	G	A	C	A	A	G	G	G	T	G	C	T	C	T	G	A	G	A	A	G	T	T	T
11	Selaginella_delicatula_6849_Guizhou		A	C	A	T	G	G	C	C	A	A	G	G	G	T	G	C	T	C	C	G	A	G	A	A	G	T	T	T
12	Selaginella_delicatula_7186_Guizhou		A	C	A	T	G	G	C	C	A	A	G	G	G	T	G	C	T	C	T	G	A	G	A	A	G	T	T	T
13	Selaginella_delicatula_LXP_09_07578_Hunan		A	C	A	T	G	G	C	C	A	A	G	G	G	T	G	C	T	C	T	G	A	G	A	A	G	T	T	T
14	Selaginella_delicatula_9212_Yunnan		A	C	A	T	G	G	A	C	A	A	G	G	G	T	G	C	T	C	T	G	A	G	A	A	G	T	T	T
15	Selaginella_delicatula_8145_Yunnan		A	C	A	T	G	G	C	C	A	A	G	G	G	T	G	C	T	C	C	G	A	G	A	A	G	T	T	T
16	Selaginella_delicatula_3018_Yunnan		A	C	A	T	G	G	C	C	A	A	G	G	G	T	G	C	T	C	T	G	A	G	A	A	G	T	T	T
17	Selaginella_delicatula_5067_Taiwan		A	C	A	T	G	G	C	C	A	A	G	G	G	A	G	C	T	C	T	G	A	A	A	A	C	T	T	T
18	Selaginella_delicatula_KY022866_Taiwan		A	C	A	T	G	G	C	C	A	A	G	G	G	N	G	C	T	C	N	G	A	N	A	A	N	T	T	T



附录8 薄叶卷柏复合群核基因*pgiC*简并碱基及其套峰示意图
 Appendix 8 Overlapping peaks and sites of the nuclear gene *pgiC* in the *Selaginella delicatula* group