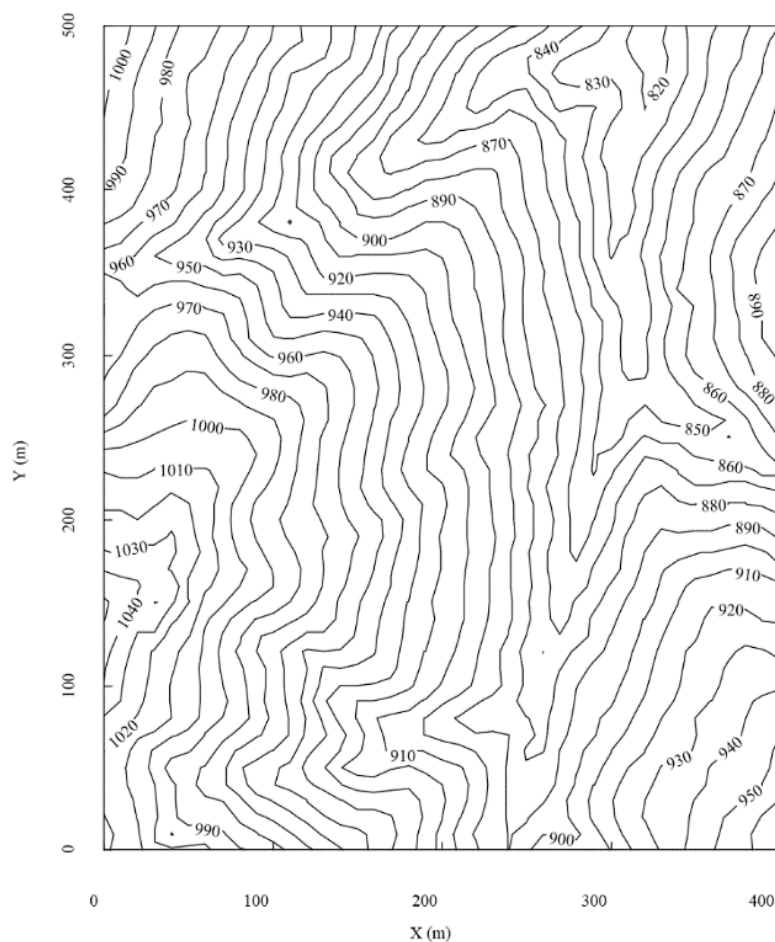


施国杉, 刘峰, 陈典, 邓云, 林露湘 (2021) 云南纳板河热带季节雨林 20 ha 动态监测样地的树种组成与群落分类. 生物多样性, 29 (1): 10–20. <http://www.biodiversity-science.net/CN/10.17520/biods.2020138>



附录2 云南纳板河热带季节雨林20 ha动态监测样地等高线图

Appendix 2 The contour map of the 20-ha tropical seasonal rainforest dynamics monitoring plot in the Naban River, Yunnan